

19500 COCHRAN BOULEVARD
PORT CHARLOTTE, FL

±1.05 - 6 AC AVAILABLE

PUNTA GORDA MSA

PRIME OUTPARCELS AVAILABLE FOR SALE OR LEASE IN GROWING TRADE AREA



MetroCommercial.com | PLYMOUTH MEETING, PA | MOUNT LAUREL, NJ | MIAMI, FL | PHILADELPHIA, PA

get in touch.

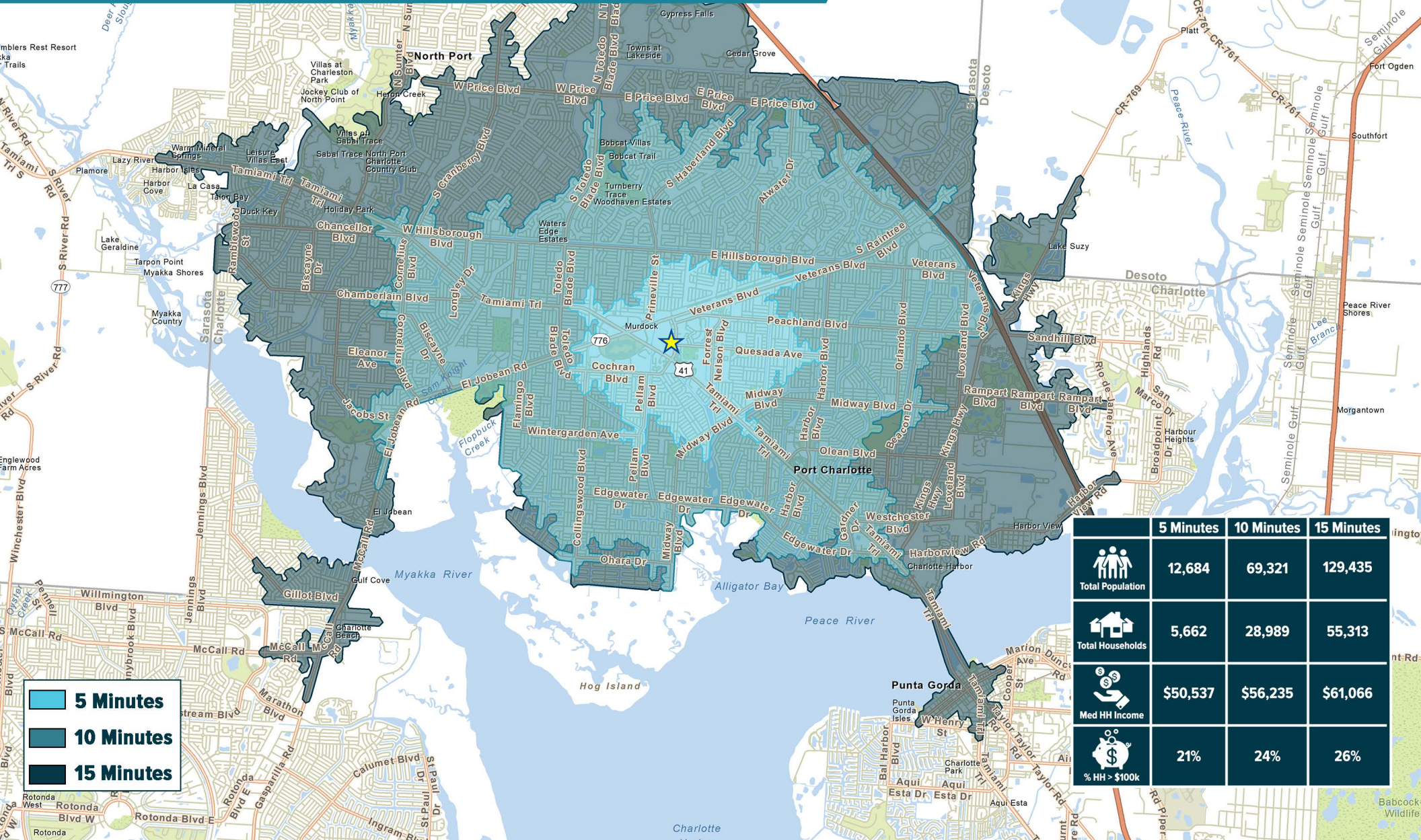
ROD CASTAN, CRRP

office 786.671.4020
direct 786.671.4022
rcastan@metrocommercial.com

COOPER JONES

office 786.671.4020
direct 786.671.4025
cjones@metrocommercial.com

28,989 TOTAL HOUSEHOLDS WITHIN A 10 MINUTE DRIVE TIME



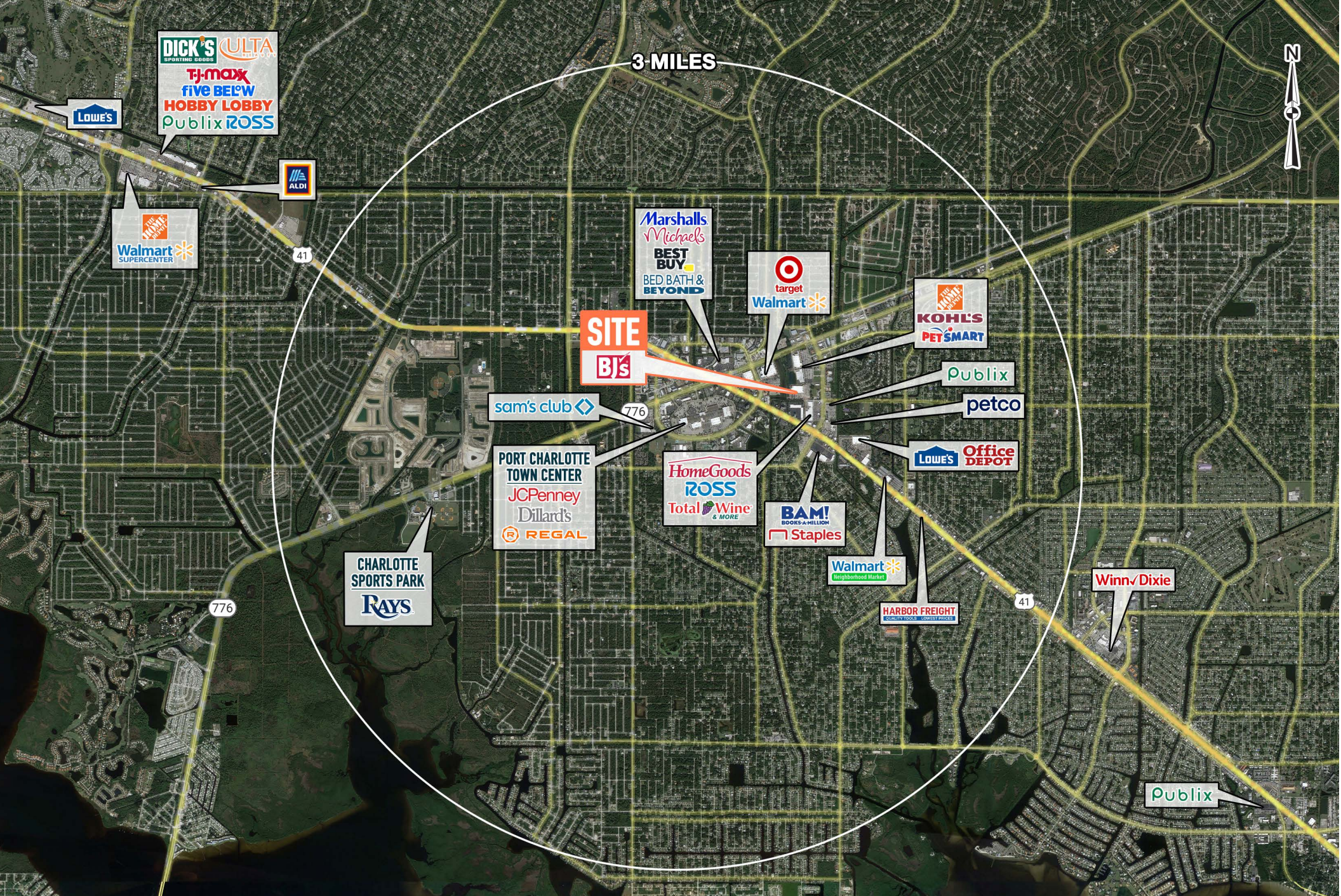
	5 Minutes	10 Minutes	15 Minutes
Total Population	12,684	69,321	129,435
Total Households	5,662	28,989	55,313
Med HH Income	\$50,537	\$56,235	\$61,066
% HH > \$100k	21%	24%	26%

The information and images contained herein are from sources deemed reliable. However, Metro Commercial Real Estate, Inc. makes no representation whatsoever as to their accuracy or authenticity. Images shown may be modified for illustrative purposes. Images may be out-of-date and not current. 02.27.24

19500 COCHRAN BOULEVARD
PORT CHARLOTTE, FL



MetroCommercial.com



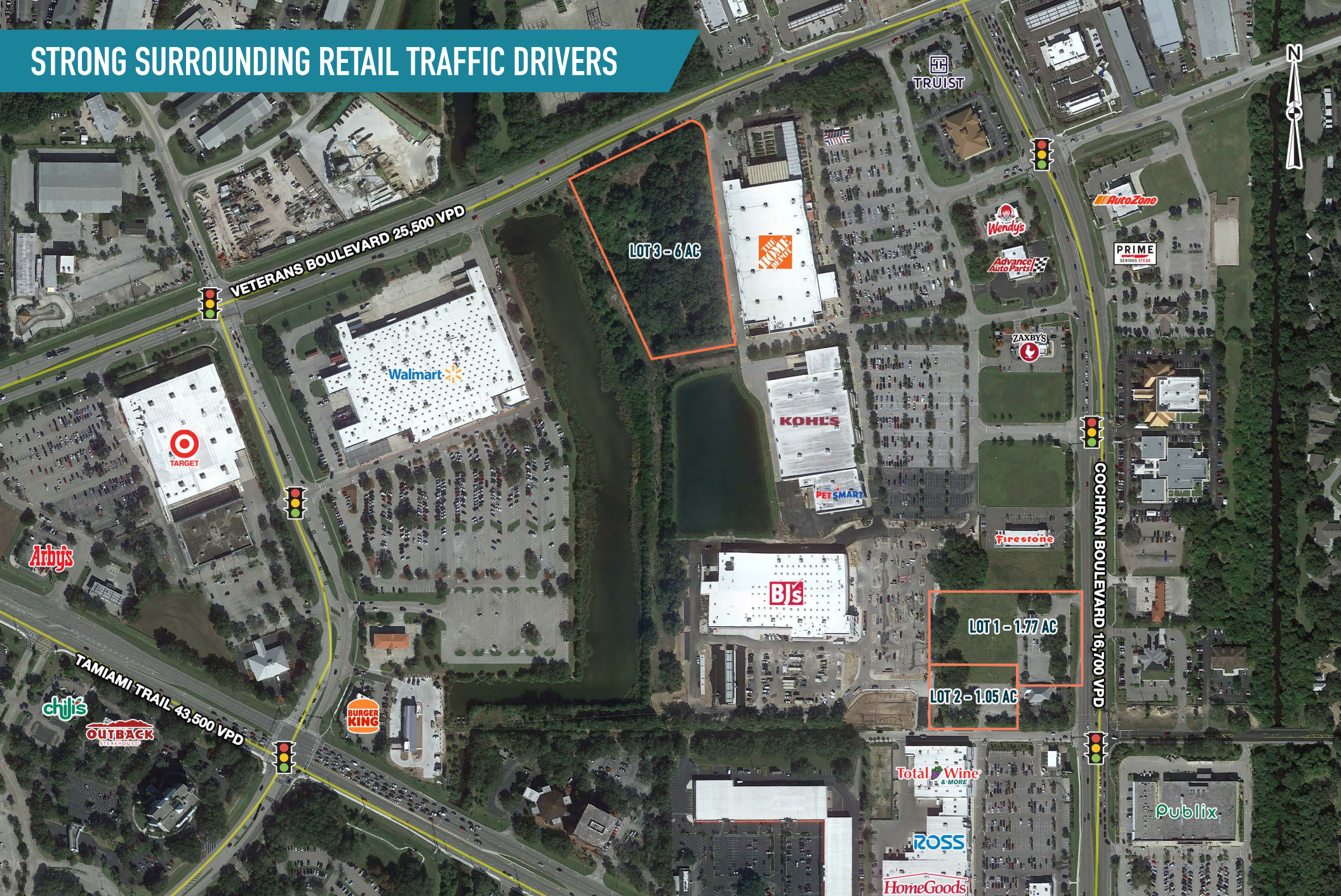
The information and images contained herein are from sources deemed reliable. However, Metro Commercial Real Estate, Inc. makes no representation whatsoever as to their accuracy or authenticity. Images shown may be modified for illustrative purposes. Images may be out-of-date and not current. 02.27.24

19500 COCHRAN BOULEVARD
PORT CHARLOTTE, FL



MetroCommercial.com

STRONG SURROUNDING RETAIL TRAFFIC DRIVERS



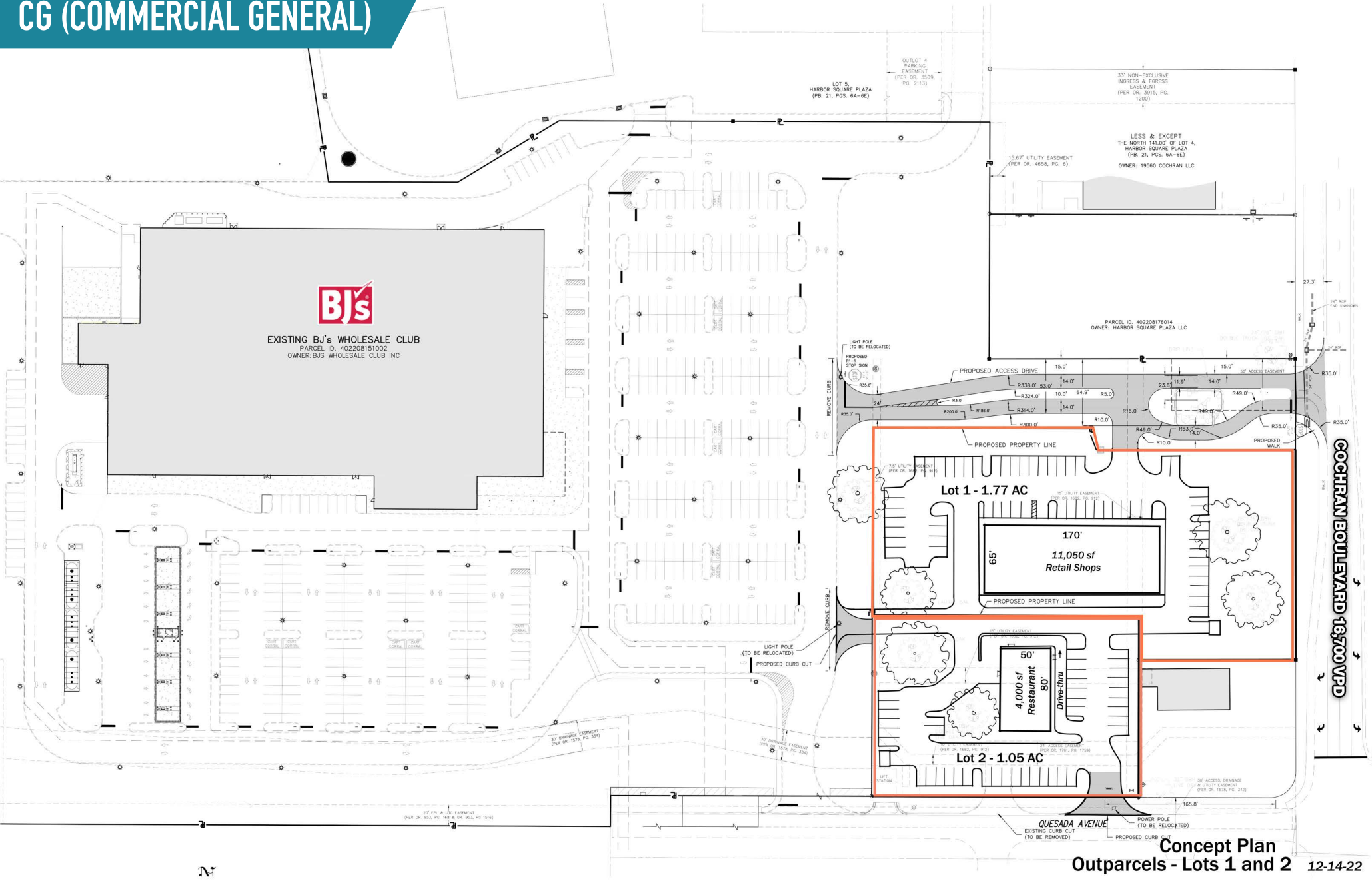
The information and images contained herein are from sources deemed reliable. However, Metro Commercial Real Estate, Inc. makes no representation whatsoever as to their accuracy or authenticity. Images shown may be modified for illustrative purposes. Images may be out-of-date and not current. 02.27.24

19500 COCHRAN BOULEVARD
PORT CHARLOTTE, FL



MetroCommercial.com

CG (COMMERCIAL GENERAL)



The information and images contained herein are from sources deemed reliable. However, Metro Commercial Real Estate, Inc. makes no representation whatsoever as to their accuracy or authenticity. Images shown may be modified for illustrative purposes. Images may be out-of-date and not current. 02.27.24

19500 COCHRAN BOULEVARD
 PORT CHARLOTTE, FL



MetroCommercial.com



The information and images contained herein are from sources deemed reliable. However, Metro Commercial Real Estate, Inc. makes no representation whatsoever as to their accuracy or authenticity. Images shown may be modified for illustrative purposes. Images may be out-of-date and not current. 02.27.24

19500 COCHRAN BOULEVARD
PORT CHARLOTTE, FL



MetroCommercial.com