

1820 ROUTE 70 WEST  
**CHERRY HILL, NJ**

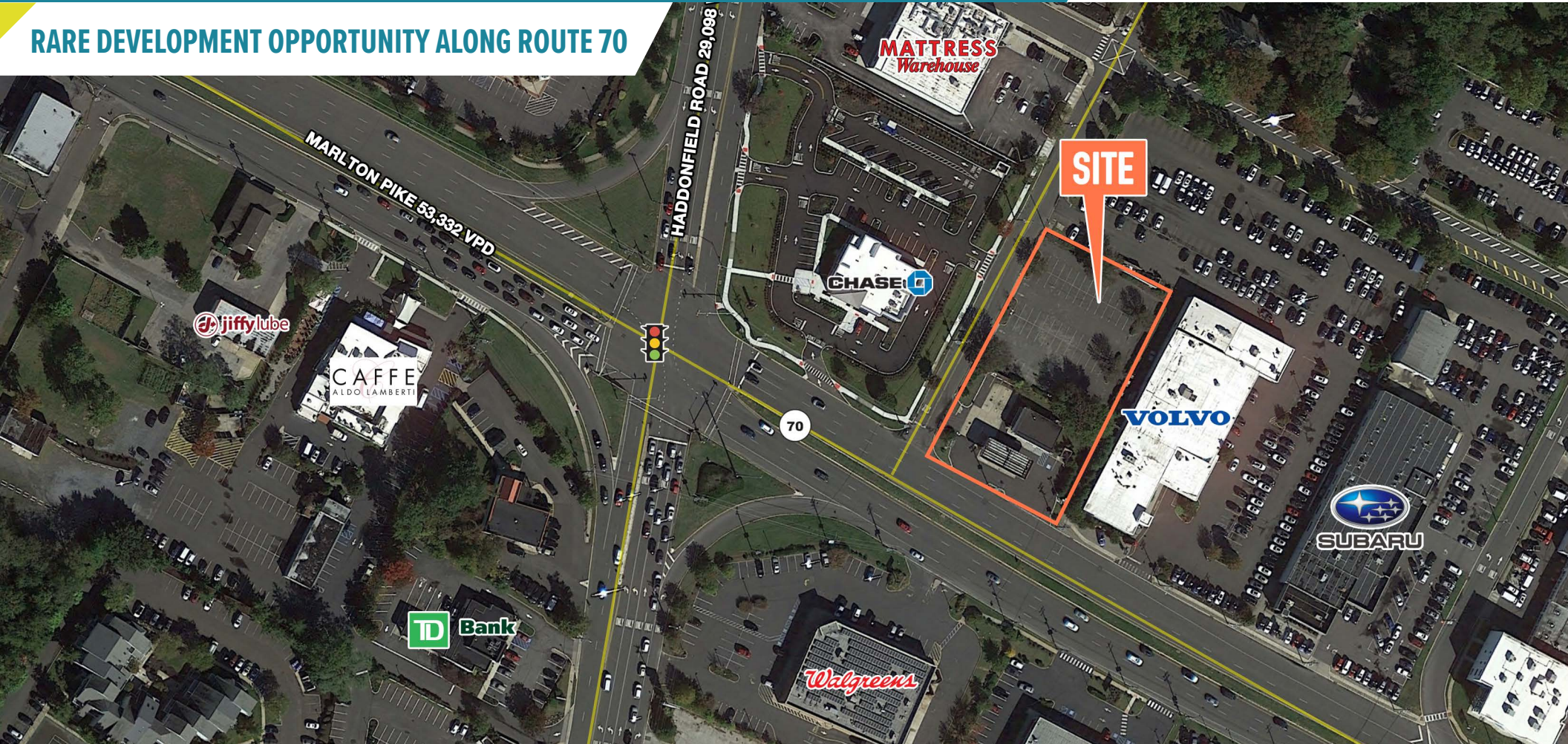
±1.01 ACRES AVAILABLE FOR LEASE

PHILADELPHIA MSA

NEARBY RETAILERS



**RARE DEVELOPMENT OPPORTUNITY ALONG ROUTE 70**



get in touch.

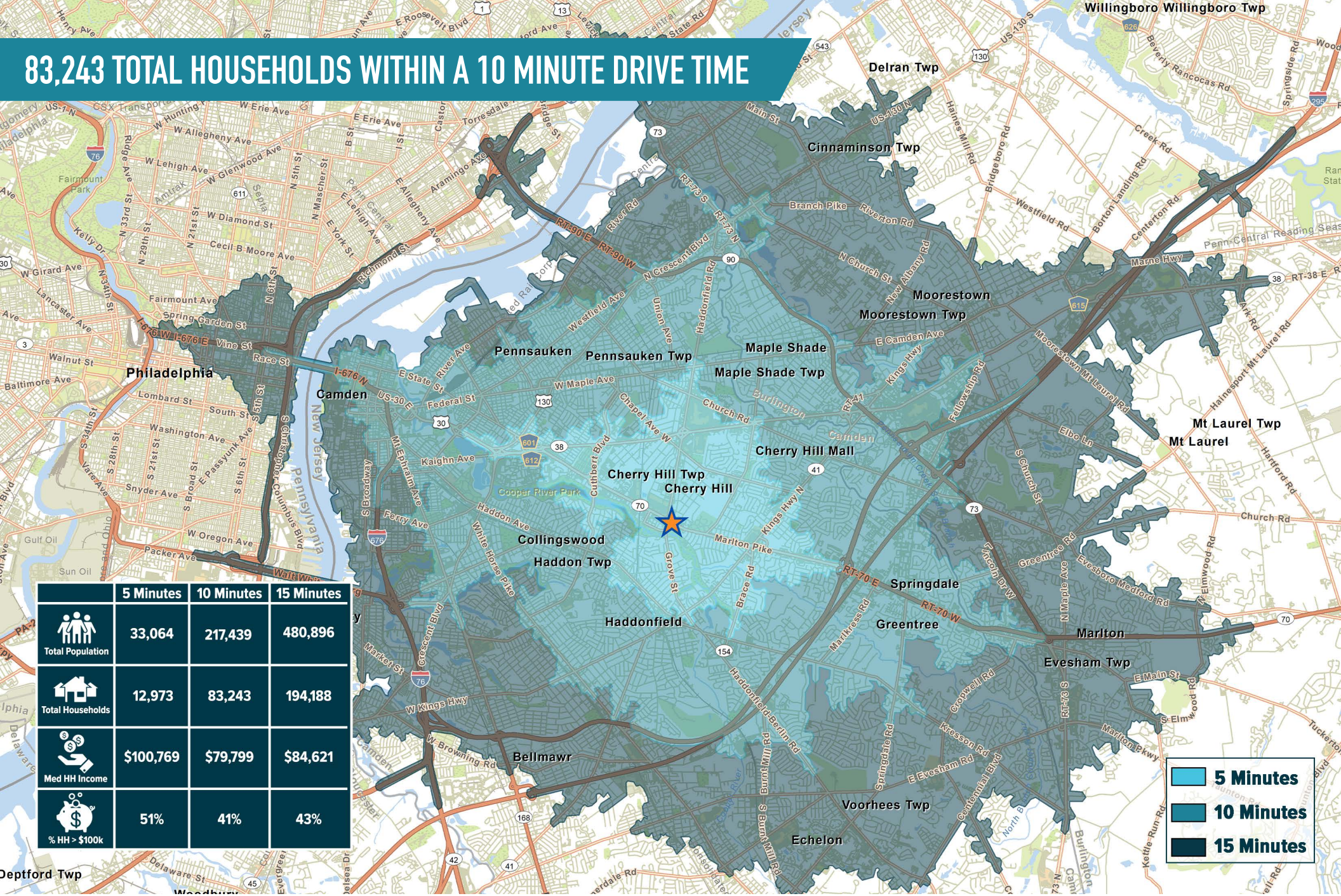
**PHILLIP AZARIK**

office 610.825.5222  
direct 610.260.2678  
pazarik@metrocommercial.com

**JONATHAN SPOERL**

office 215.893.0300  
direct 215.282.0155  
jspoerl@metrocommercial.com

# 83,243 TOTAL HOUSEHOLDS WITHIN A 10 MINUTE DRIVE TIME



	5 Minutes	10 Minutes	15 Minutes
Total Population	33,064	217,439	480,896
Total Households	12,973	83,243	194,188
Med HH Income	\$100,769	\$79,799	\$84,621
% HH > \$100k	51%	41%	43%

The information and images contained herein are from sources deemed reliable. However, Metro Commercial Real Estate, Inc. makes no representation whatsoever as to their accuracy or authenticity. Images shown may be modified for illustrative purposes. Images may be out-of-date and not current. 02.27.23

1820 ROUTE 70 WEST  
CHERRY HILL, NJ



MetroCommercial.com

# EASILY ACCESSIBLE FROM PHILADELPHIA AND ALL OF SOUTH JERSEY



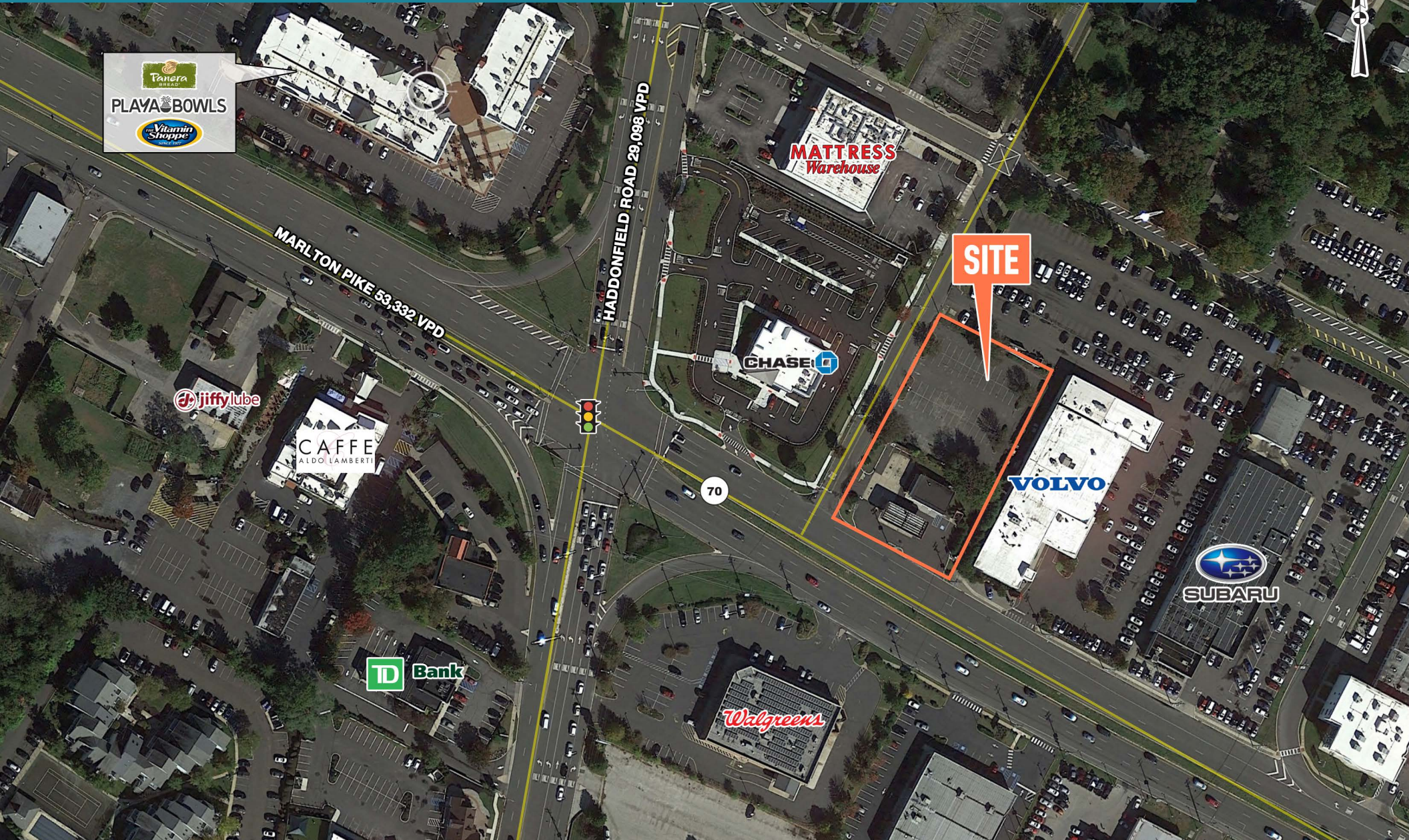
The information and images contained herein are from sources deemed reliable. However, Metro Commercial Real Estate, Inc. makes no representation whatsoever as to their accuracy or authenticity. Images shown may be modified for illustrative purposes. Images may be out-of-date and not current. 02.27.23

1820 ROUTE 70 WEST  
**CHERRY HILL, NJ**



MetroCommercial.com

# LOCATED AT THE BUSIEST INTERSECTION IN CHERRY HILL, NJ WITH PHENOMENAL VISIBILITY



The information and images contained herein are from sources deemed reliable. However, Metro Commercial Real Estate, Inc. makes no representation whatsoever as to their accuracy or authenticity. Images shown may be modified for illustrative purposes. Images may be out-of-date and not current. 02:27:23

1820 ROUTE 70 WEST  
CHERRY HILL, NJ



MetroCommercial.com