

FORMER WELLS FARGO
WHITEHALL, PA

1205 GRAPE STREET

±3,956 SF BUILDING ON ±0.63 ACRES AVAILABLE FOR LEASE

ALLENTOWN MSA

DRIVE-THRU BUILDING!



MetroCommercial.com | PLYMOUTH MEETING, PA | MOUNT LAUREL, NJ

get in touch.

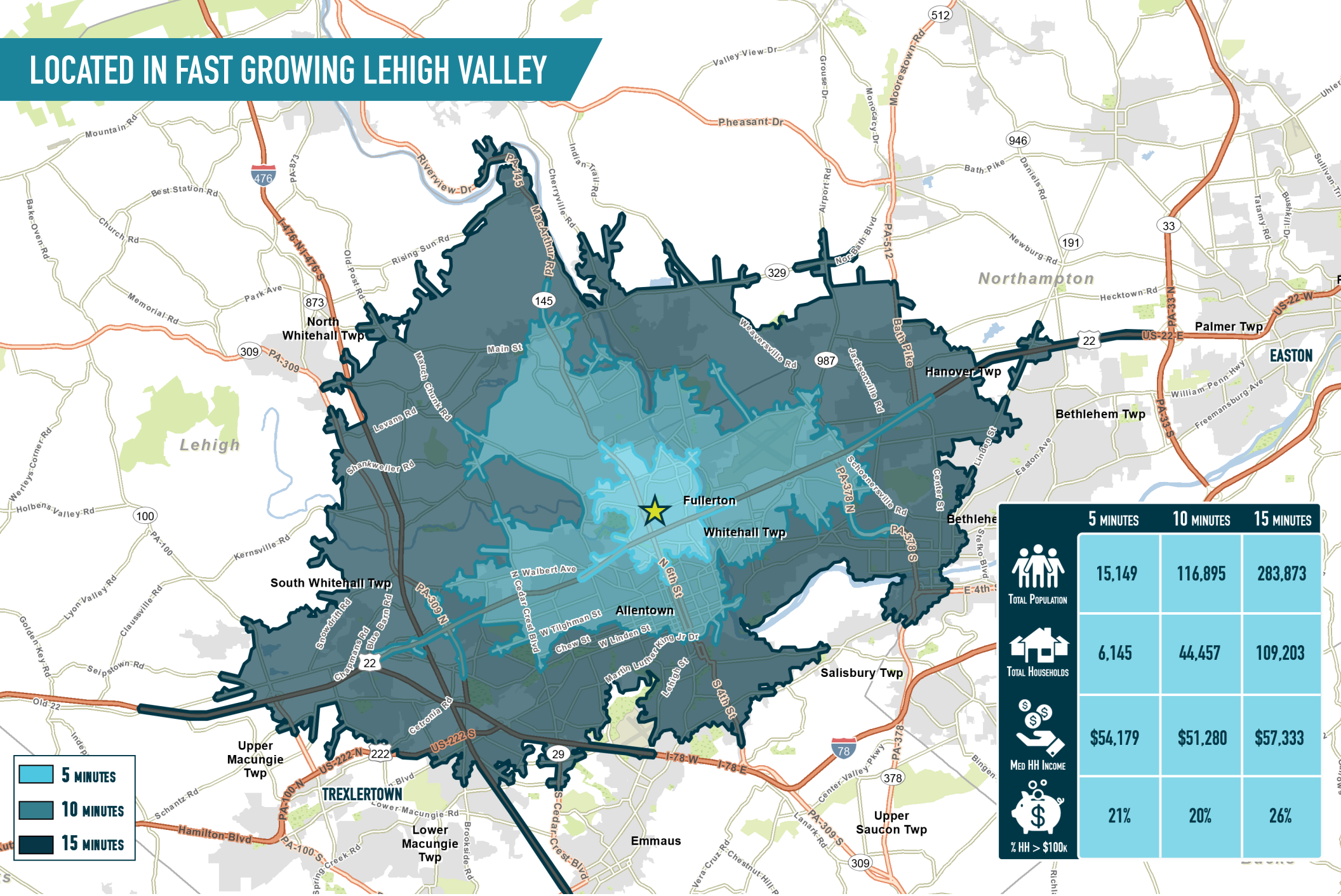
JOE DOUGHERTY

office 610.825.5222
direct 610.260.2670
jdougherty@metrocommercial.com

VALERIE BARGER

office 610.825.5222
direct 610.260.2661
vbarger@metrocommercial.com

LOCATED IN FAST GROWING LEHIGH VALLEY



5 MINUTES
 10 MINUTES
 15 MINUTES

	5 MINUTES	10 MINUTES	15 MINUTES
TOTAL POPULATION	15,149	116,895	283,873
TOTAL HOUSEHOLDS	6,145	44,457	109,203
MED HH INCOME	\$54,179	\$51,280	\$57,333
% HH > \$100k	21%	20%	26%

The information and images contained herein are from sources deemed reliable. However, Metro Commercial Real Estate, Inc. makes no representation whatsoever as to their accuracy or authenticity. Images shown may be modified for illustrative purposes. Images may be out-of-date and not current. 11.30.23

FORMER WELLS FARGO
WHITEHALL, PA
 1205 GRAPE STREET



www.metrocommercial.com

SUPER REGIONAL TRADE AREA

3 MILES



The information and images contained herein are from sources deemed reliable. However, Metro Commercial Real Estate, Inc. makes no representation whatsoever as to their accuracy or authenticity. Images shown may be modified for illustrative purposes. Images may be out-of-date and not current. 11:30:23

FORMER WELLS FARGO
WHITEHALL, PA
 1205 GRAPE STREET

LOCATED ACROSS FROM LEHIGH VALLEY MALL



The information and images contained herein are from sources deemed reliable. However, Metro Commercial Real Estate, Inc. makes no representation whatsoever as to their accuracy or authenticity. Images shown may be modified for illustrative purposes. Images may be out-of-date and not current. 11.30.23

FORMER WELLS FARGO
WHITEHALL, PA
1205 GRAPE STREET



www.metrocommercial.com

PAD SITE TO WHITEHALL MALL REDEVELOPMENT



±3,956 SF
WITH DRIVE-THRU

FLOOR DECOR
(UNDER CONSTRUCTION)

WHITEHALL MALL
(UNDER ACTIVE REDEVELOPMENT)

MISSION BBQ

WILD WINGS
BUFFALO

ARMY & NAVY
SUPERMARKET

ARMY & NAVY

LEHIGH VALLEY MALL

GRAPE STREET 7,124 VPD

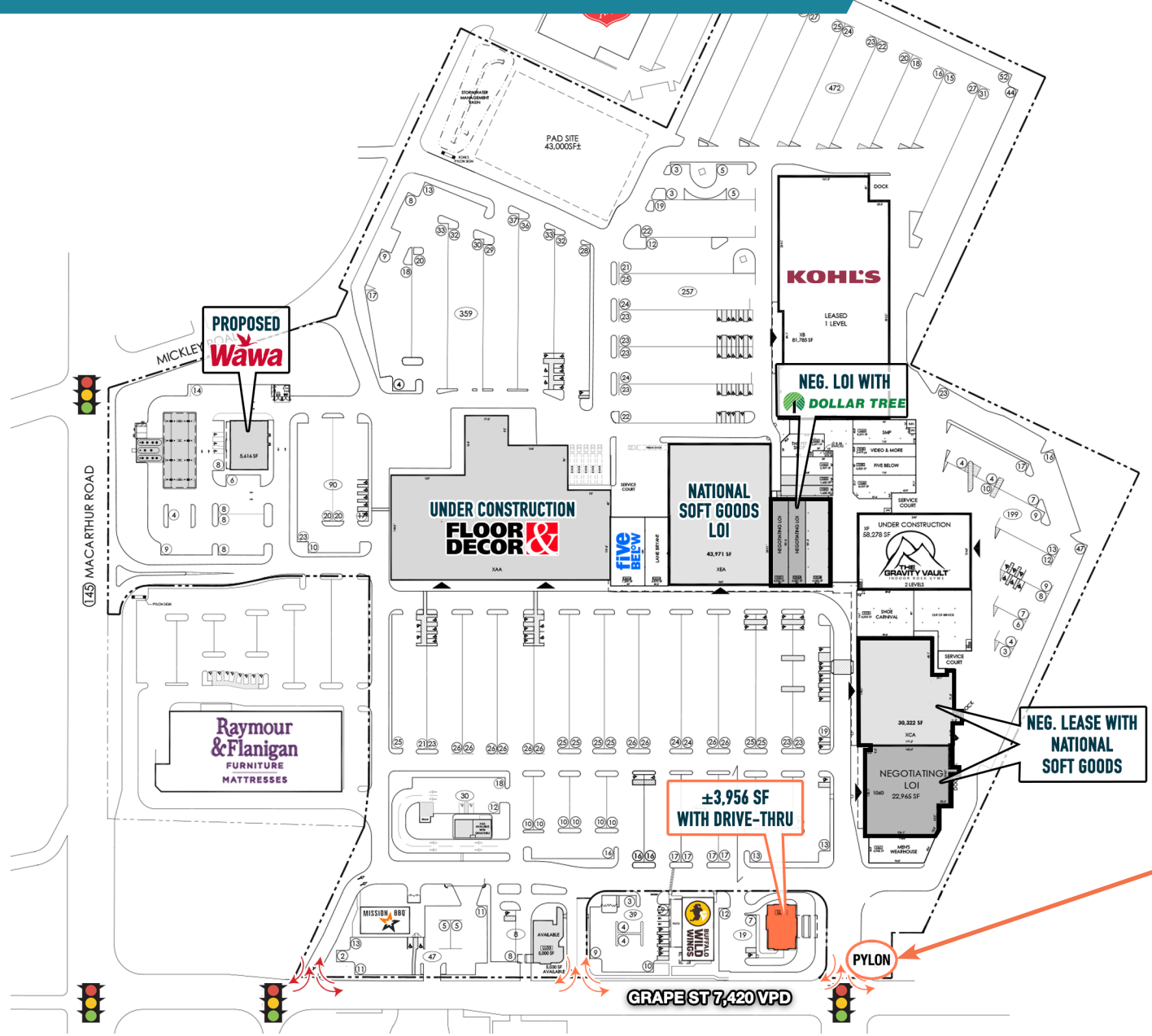
FORMER WELLS FARGO
WHITEHALL, PA
1205 GRAPE STREET



www.metrocommercial.com

The information and images contained herein are from sources deemed reliable. However, Metro Commercial Real Estate, Inc. makes no representation whatsoever as to their accuracy or authenticity. Images shown may be modified for illustrative purposes. Images may be out-of-date and not current. 11.30.23

WHITEHALL MALL CONCEPTUAL RE-DEVELOPMENT SITE PLAN



The information and images contained herein are from sources deemed reliable. However, Metro Commercial Real Estate, Inc. makes no representation whatsoever as to their accuracy or authenticity. Images shown may be modified for illustrative purposes. Images may be out-of-date and not current. 11.30.23

FORMER WELLS FARGO
WHITEHALL, PA
 1205 GRAPE STREET



www.metrocommercial.com

PROPERTY PHOTO



The information and images contained herein are from sources deemed reliable. However, Metro Commercial Real Estate, Inc. makes no representation whatsoever as to their accuracy or authenticity. Images shown may be modified for illustrative purposes. Images may be out-of-date and not current. 11.30.23

FORMER WELLS FARGO
WHITEHALL, PA
1205 GRAPE STREET



www.metrocommercial.com