

PHILADELPHIA, PA

1614 - 1620 RIDGE AVENUE (FAIRMOUNT / FRANCISVILLE)

±3,760 SF (DIVISIBLE) AVAILABLE FOR LEASE

PHILADELPHIA MSA

AREA RETAILERS



CASUAL'UXURY
ATELIER

EST. 2010
BOLD
COFFEE BAR

NEW DEVELOPMENT RETAIL SPACES FOR LEASE ON RIDGE AVE!



MetroCommercial.com | PLYMOUTH MEETING, PA | MOUNT LAUREL, NJ

get in touch.

JONATHAN SPOERL

office 215.893.0300
direct 215.282.0157
jspoerl@metrocommercial.com

SAM THIERS

office 610.825.5222
direct 610.260.2665
sthiers@metrocommercial.com

17,860 TOTAL POPULATION WITHIN 0.5 MILES OF SITE



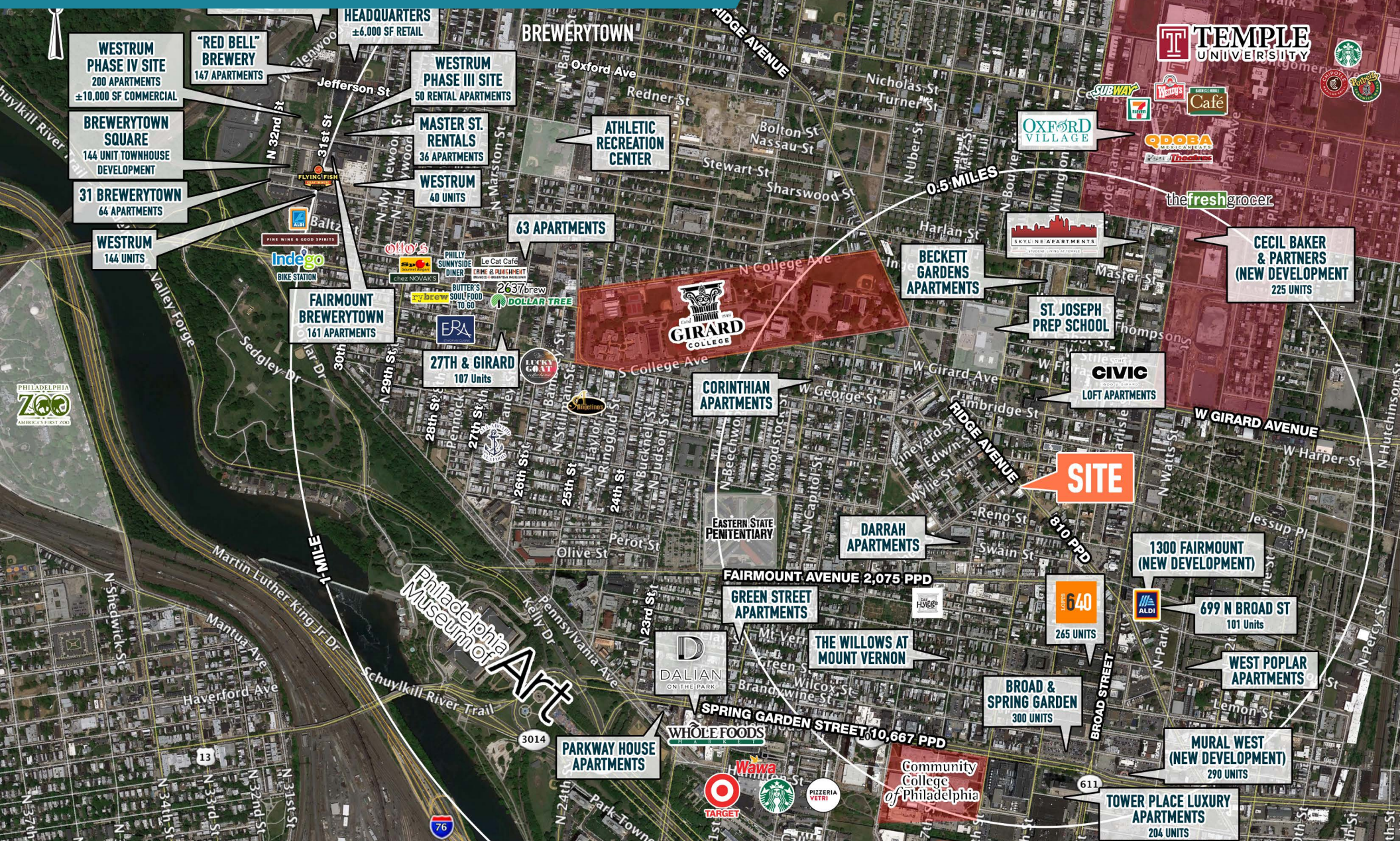
The information and images contained herein are from sources deemed reliable. However, Metro Commercial Real Estate, Inc. makes no representation whatsoever as to their accuracy or authenticity. Images shown may be modified for illustrative purposes. Images may be out-of-date and not current. 08.16.22

1614-1620 RIDGE AVE
PHILADELPHIA, PA



www.metrocommercial.com

NEARBY TO TEMPLE UNIVERSITY AND GIRARD COLLEGE



The information and images contained herein are from sources deemed reliable. However, Metro Commercial Real Estate, Inc. makes no representation whatsoever as to their accuracy or authenticity. Images shown may be modified for illustrative purposes. Images may be out-of-date and not current. 08.16.22

1614-1620 RIDGE AVE
PHILADELPHIA, PA



www.metrocommercial.com

JOIN THIS FAST GROWING SECTION OF FAIRMOUNT!



AMIR'S KITCHEN

BOLD
COFFEE BAR

VINEYARDS
CAFE

SITE

MING KONG CHINESE

FAIRMOUNT

JUICED

GLO NAIL BAR

Inhale
Exhale

CASUAL'UXURY
ATELIER

SOLAGE PHARMACY
WELLNESS SHOP

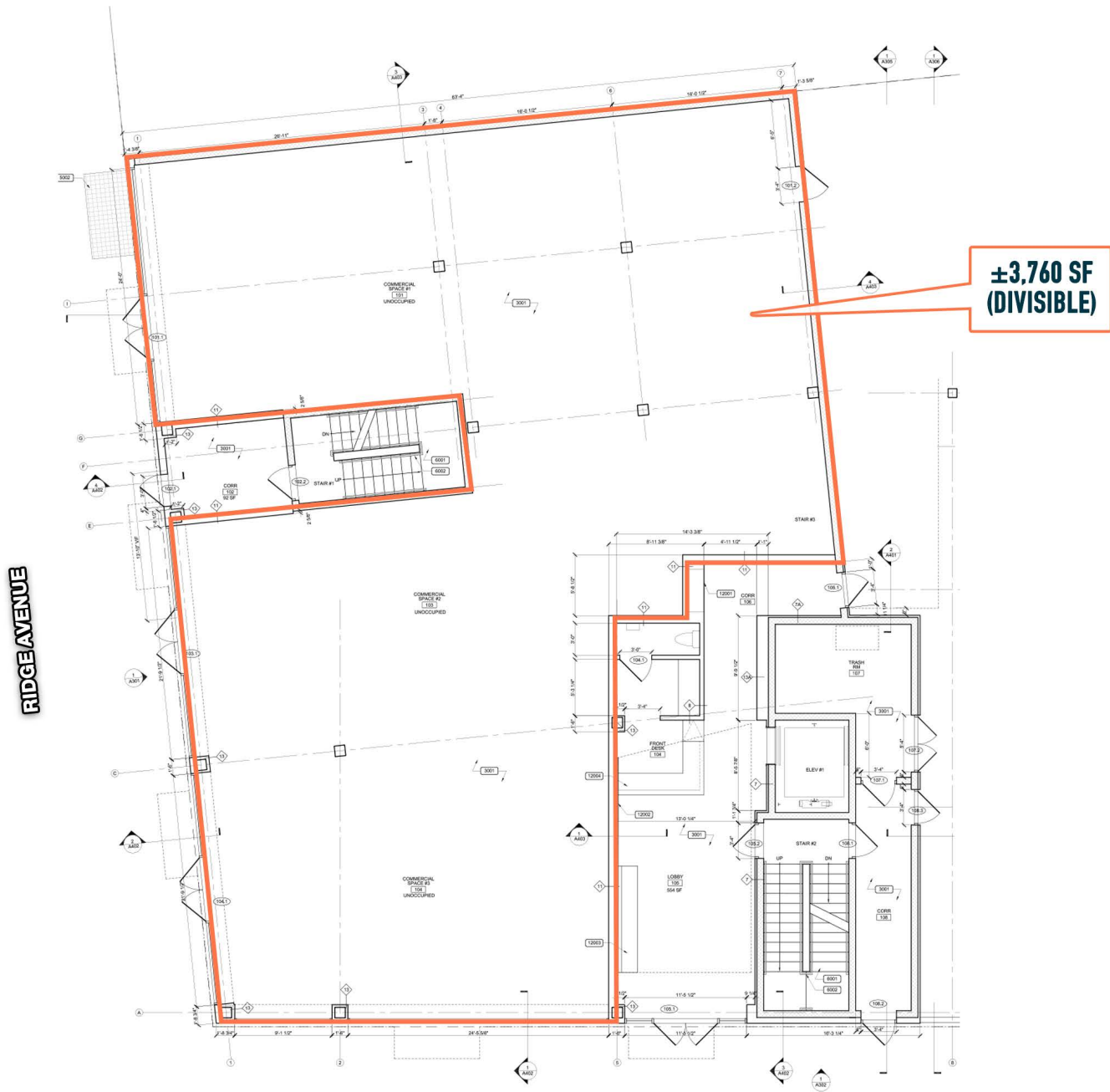
The information and images contained herein are from sources deemed reliable. However, Metro Commercial Real Estate, Inc. makes no representation whatsoever as to their accuracy or authenticity. Images shown may be modified for illustrative purposes. Images may be out-of-date and not current. 08.16.22

1614-1620 RIDGE AVE
PHILADELPHIA, PA

METRO
COMMERCIAL

www.metrocommercial.com

SITE PLAN



RIDGE AVENUE

**$\pm 3,760$ SF
(DIVISIBLE)**

The information and images contained herein are from sources deemed reliable. However, Metro Commercial Real Estate, Inc. makes no representation whatsoever as to their accuracy or authenticity. Images shown may be modified for illustrative purposes. Images may be out-of-date and not current. 08.16.22

1614-1620 RIDGE AVE
PHILADELPHIA, PA



www.metrocommercial.com