

# PHILADELPHIA, PA

1929-1945 YORK STREET

±1,452 SF AVAILABLE FOR LEASE

PHILADELPHIA MSA

NEARBY RETAILERS



SPACE AVAILABLE IN NEW CONSTRUCTION MIXED-USE PROJECT IN FISHTOWN



MetroCommercial.com | PLYMOUTH MEETING, PA | MOUNT LAUREL, NJ | MIAMI, FL | PHILADELPHIA, PA

get in touch.

**IRYNA IRYK**

office 267.335.7749

direct 215.282.0156

iiryk@metrocommercial.com

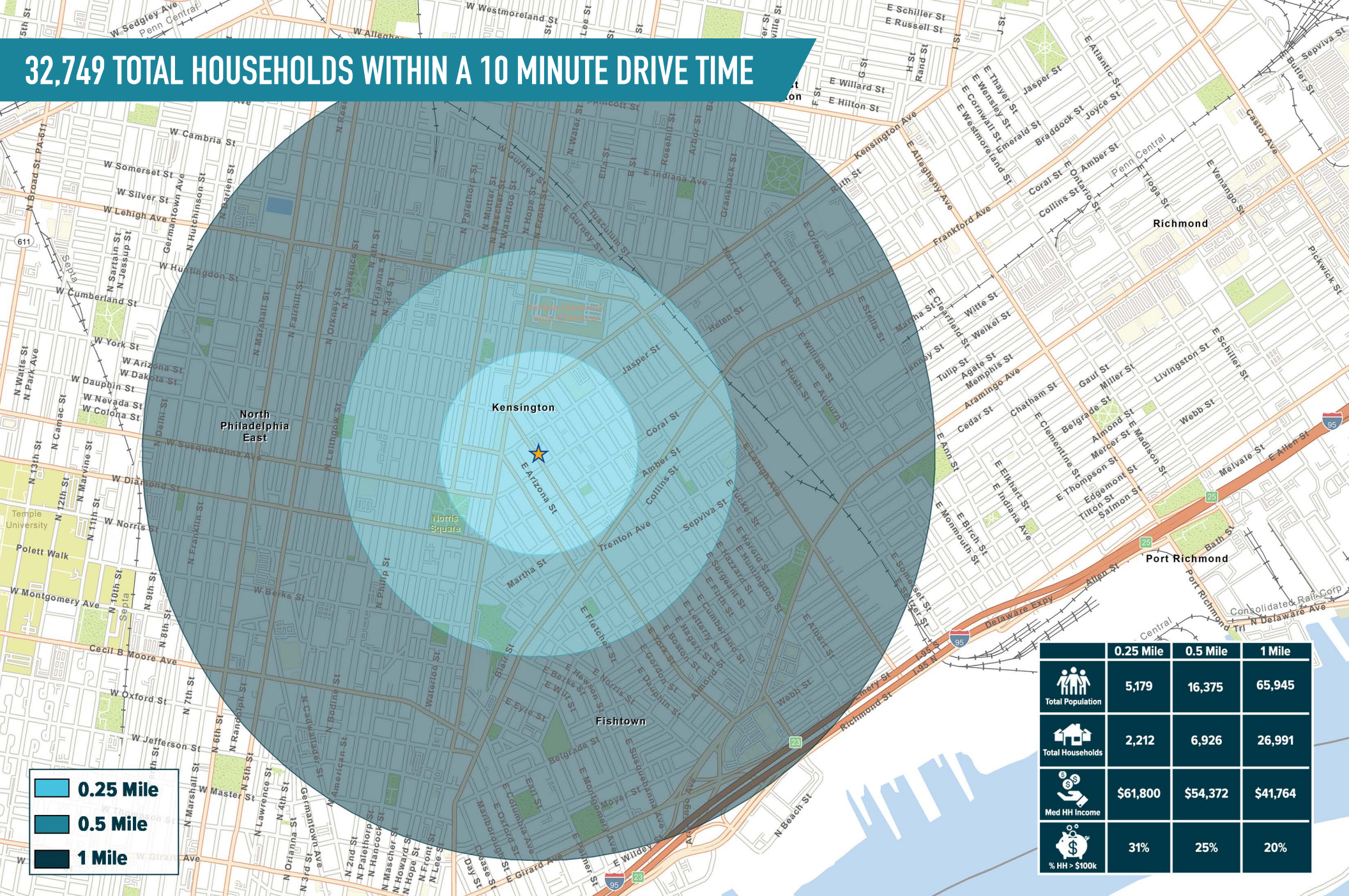
**MICHAEL GORMAN**

office 215.893.0300

direct 215.282.0152

mgorman@metrocommercial.com

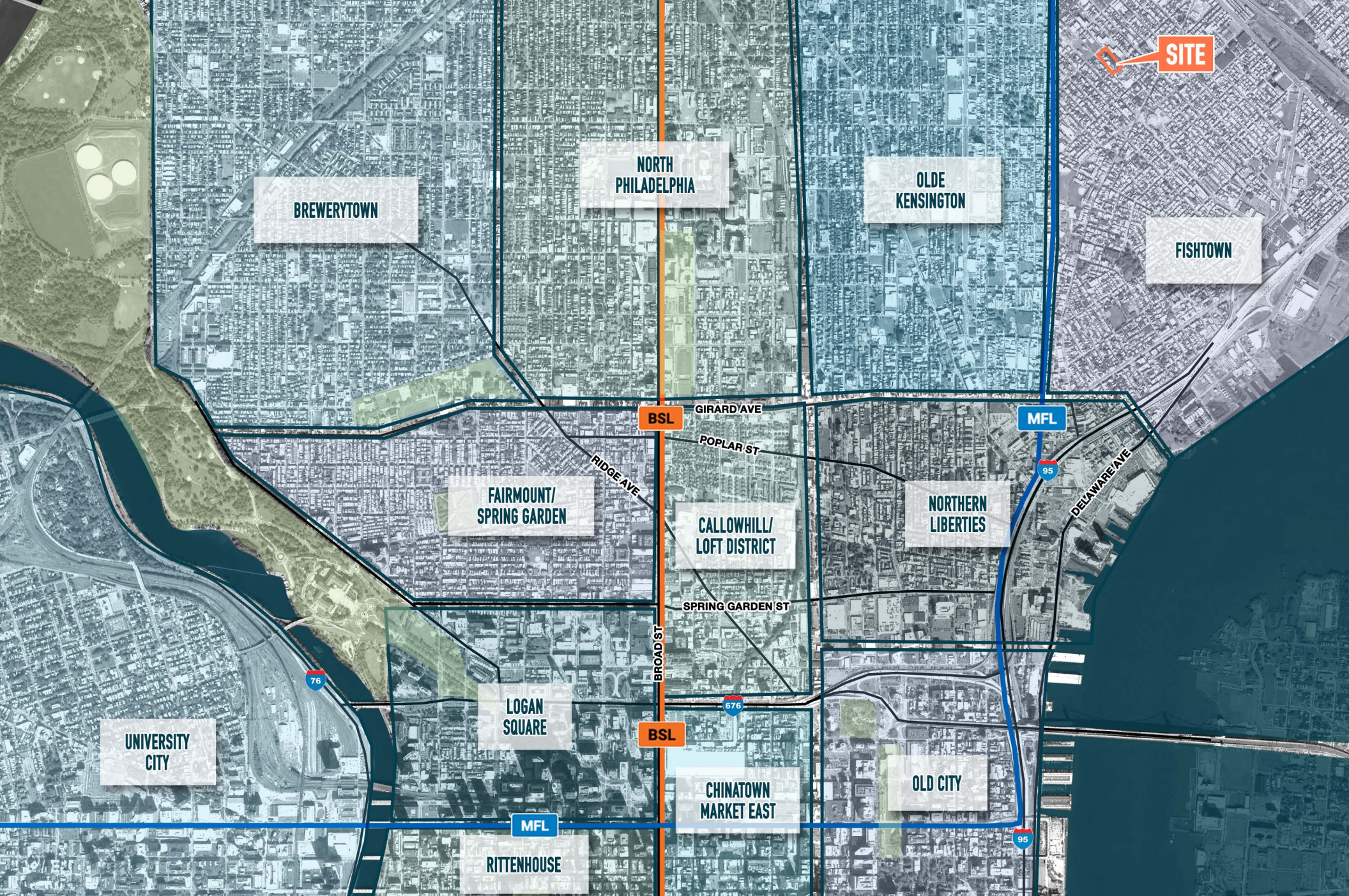
# 32,749 TOTAL HOUSEHOLDS WITHIN A 10 MINUTE DRIVE TIME



- 0.25 Mile
- 0.5 Mile
- 1 Mile

	0.25 Mile	0.5 Mile	1 Mile
Total Population	5,179	16,375	65,945
Total Households	2,212	6,926	26,991
Med HH Income	\$61,800	\$54,372	\$41,764
% HH > \$100k	31%	25%	20%

The information and images contained herein are from sources deemed reliable. However, Metro Commercial Real Estate, Inc. makes no representation whatsoever as to their accuracy or authenticity. Images shown may be modified for illustrative purposes. Images may be out-of-date and not current. 03.22.23



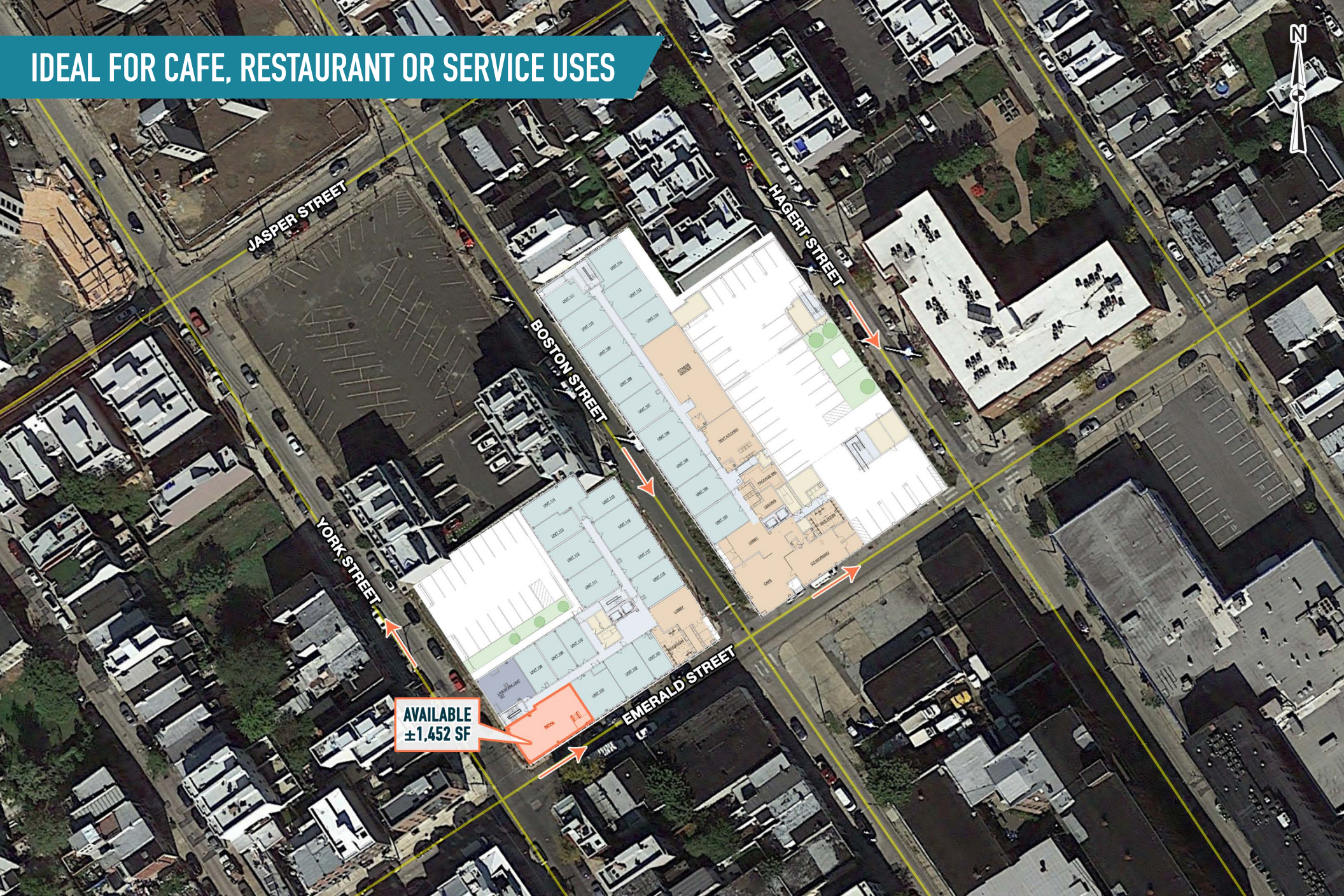
The information and images contained herein are from sources deemed reliable. However, Metro Commercial Real Estate, Inc. makes no representation whatsoever as to their accuracy or authenticity. Images shown may be modified for illustrative purposes. Images may be out-of-date and not current. 03.22.23

**PHILADELPHIA, PA**  
1929-1945 YORK STREET



MetroCommercial.com

IDEAL FOR CAFE, RESTAURANT OR SERVICE USES



AVAILABLE  
±1,452 SF

The information and images contained herein are from sources deemed reliable. However, Metro Commercial Real Estate, Inc. makes no representation whatsoever as to their accuracy or authenticity. Images shown may be modified for illustrative purposes. Images may be out-of-date and not current. 03.22.23

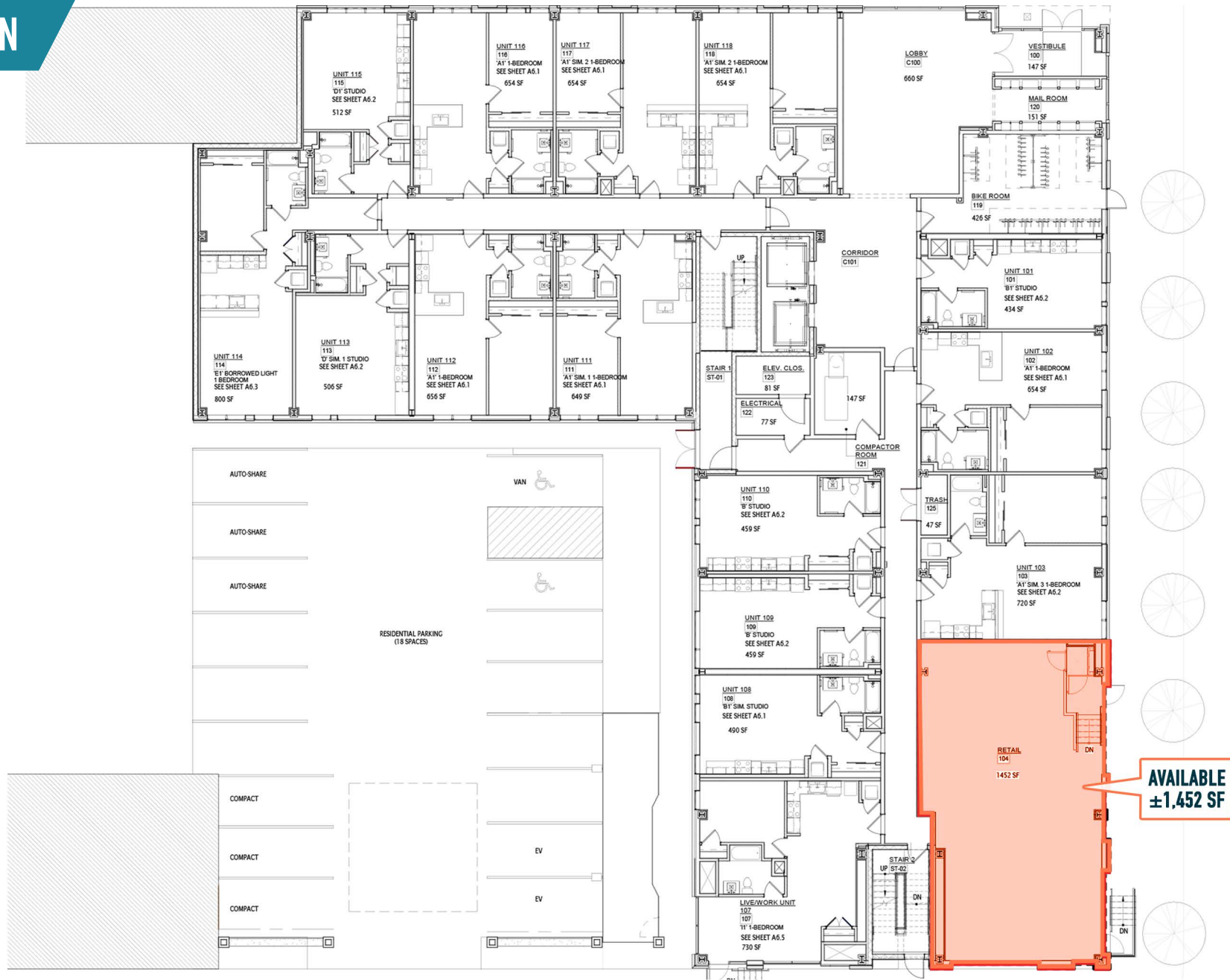
PHILADELPHIA, PA  
1929-1945 YORK STREET



MetroCommercial.com



# SITE PLAN



**AVAILABLE**  
±1,452 SF

The information and images contained herein are from sources deemed reliable. However, Metro Commercial Real Estate, Inc. makes no representation whatsoever as to their accuracy or authenticity. Images shown may be modified for illustrative purposes. Images may be out-of-date and not current. 03.22.23

# PROPERTY RENDERINGS



The information and images contained herein are from sources deemed reliable. However, Metro Commercial Real Estate, Inc. makes no representation whatsoever as to their accuracy or authenticity. Images shown may be modified for illustrative purposes. Images may be out-of-date and not current. 03.22.23

**PHILADELPHIA, PA**  
1929-1945 YORK STREET



MetroCommercial.com