

2278-2291 STREET ROAD

BENSALEM, PA

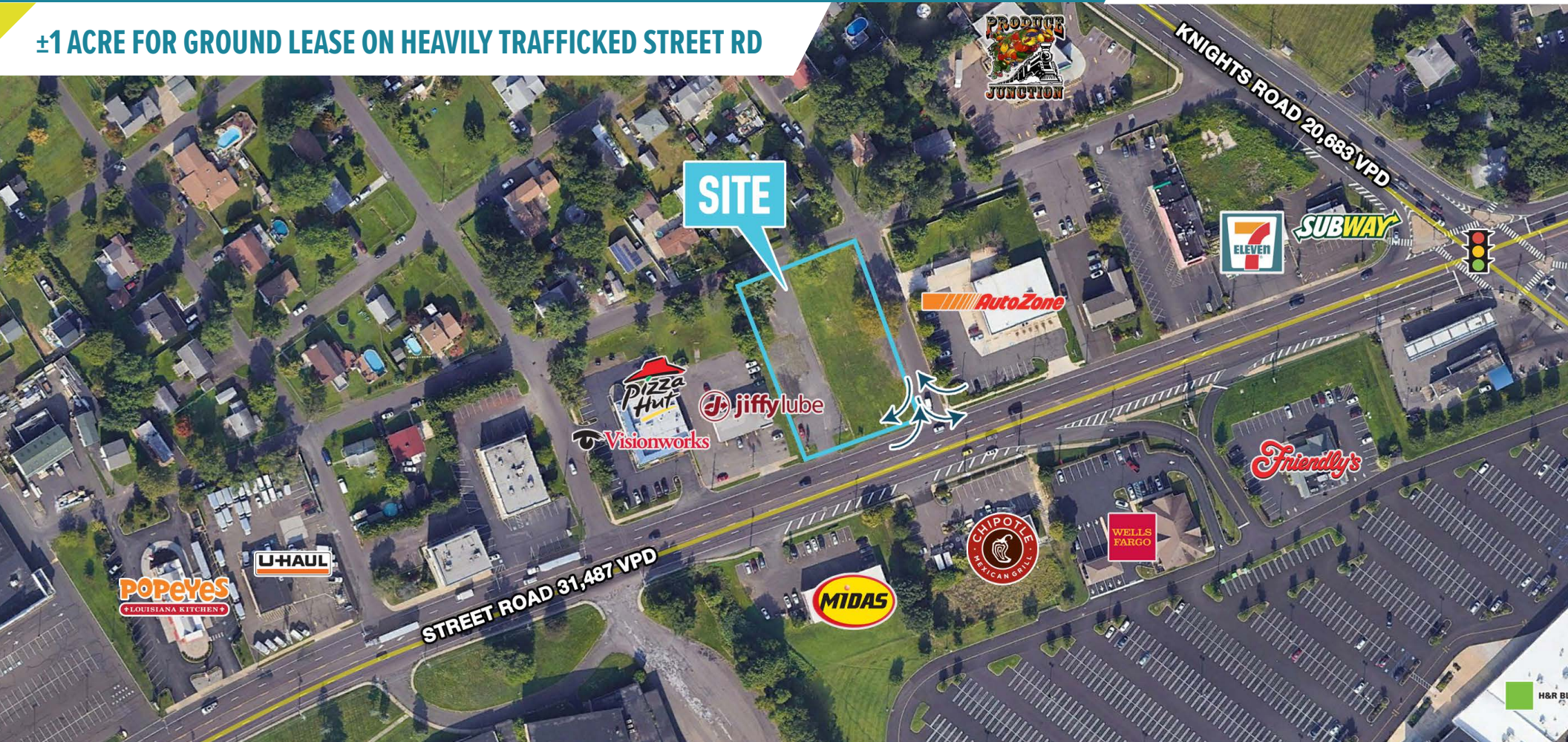
±1 ACRE FOR GROUND LEASE

PHILADELPHIA MSA

AREA RETAILERS



±1 ACRE FOR GROUND LEASE ON HEAVILY TRAFFICKED STREET RD



MetroCommercial.com | PLYMOUTH MEETING, PA | MOUNT LAUREL, NJ

get in touch.

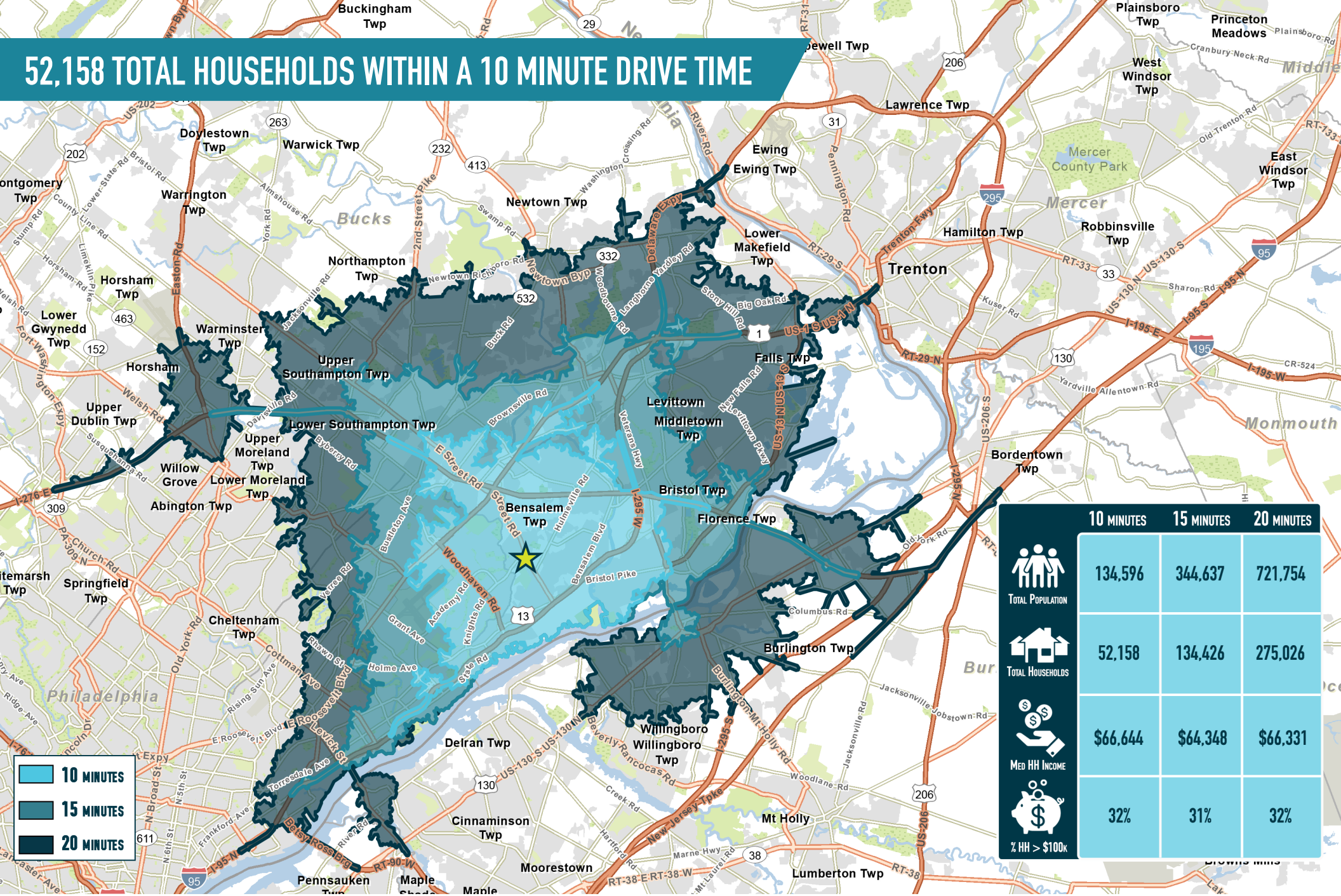
ANDREW SHPIGEL

office 215.893.0300

direct 215.282.0153

ashpigel@metrocommercial.com

52,158 TOTAL HOUSEHOLDS WITHIN A 10 MINUTE DRIVE TIME



	10 MINUTES	15 MINUTES	20 MINUTES
TOTAL POPULATION	134,596	344,637	721,754
TOTAL HOUSEHOLDS	52,158	134,426	275,026
MED HH INCOME	\$66,644	\$64,348	\$66,331
% HH > \$100k	32%	31%	32%

10 MINUTES
15 MINUTES
20 MINUTES

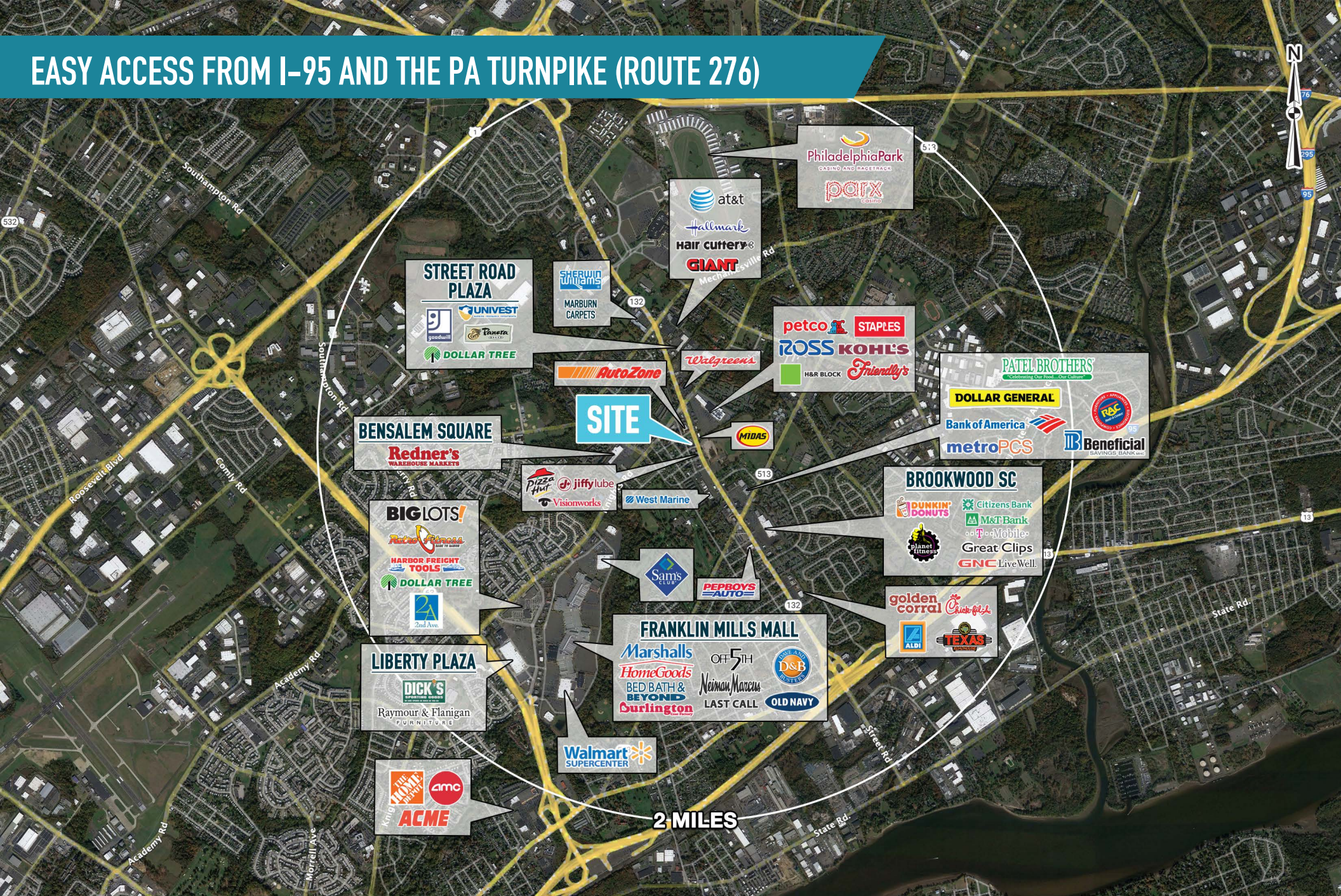
The information and images contained herein are from sources deemed reliable. However, Metro Commercial Real Estate, Inc. makes no representation whatsoever as to their accuracy or authenticity. Images shown may be modified for illustrative purposes. Images may be out-of-date and not current. 03.14.22

2278-2291 STREET ROAD
BENSALEM, PA



www.metrocommercial.com

EASY ACCESS FROM I-95 AND THE PA TURNPIKE (ROUTE 276)



STREET ROAD PLAZA

- UNIVEST
- goodwill
- Panera
- DOLLAR TREE

SHERWIN WILLIAMS

MARBURN CARPETS

at&t

Hallmark

Hair cutters

GIANT

PhiladelphiaPark

CASINO AND RACETRACK

PARX

petco

STAPLES

ROSS KOHL'S

H&R BLOCK

Friendly's

PATEL BROTHERS

Calcuttina Our Food - Our Culture

DOLLAR GENERAL

Bank of America

metroPCS

Beneficial SAVINGS BANK

BENSALEM SQUARE

Redner's WAREHOUSE MARKETS

SITE

MIDAS

Pizza Hut

jiffylube

Visionworks

West Marine

BROOKWOOD SC

DUNKIN' DONUTS

Citizens Bank

M&T Bank

T-Mobile

Great Clips

GNC LiveWell

BIG LOTS!

Harbor Freight TOOLS

DOLLAR TREE

2nd Ave

Sam's CLUB

PEPBOYS AUTO

LIBERTY PLAZA

DICK'S SPORTS & SHIRT

Raymour & Flanigan FURNITURE

FRANKLIN MILLS MALL

Marshalls

HomeGoods

BED BATH & BEYOND

OFF 5TH

Neiman Marcus

LAST CALL

OLD NAVY

DSB SYSTEM

golden corral

ALDI

TEXAS ROADHOUSE

Walmart SUPERCENTER

THE HOME DEPOT

amc

ACME

The information and images contained herein are from sources deemed reliable. However, Metro Commercial Real Estate, Inc. makes no representation whatsoever as to their accuracy or authenticity. Images shown may be modified for illustrative purposes. Images may be out-of-date and not current. 03.14.22

2278-2291 STREET ROAD
BENSALEM, PA



www.metrocommercial.com

DRIVE-THRU OPPORTUNITY AVAILABLE IN HIGH BARRIER TO ENTRY MARKET



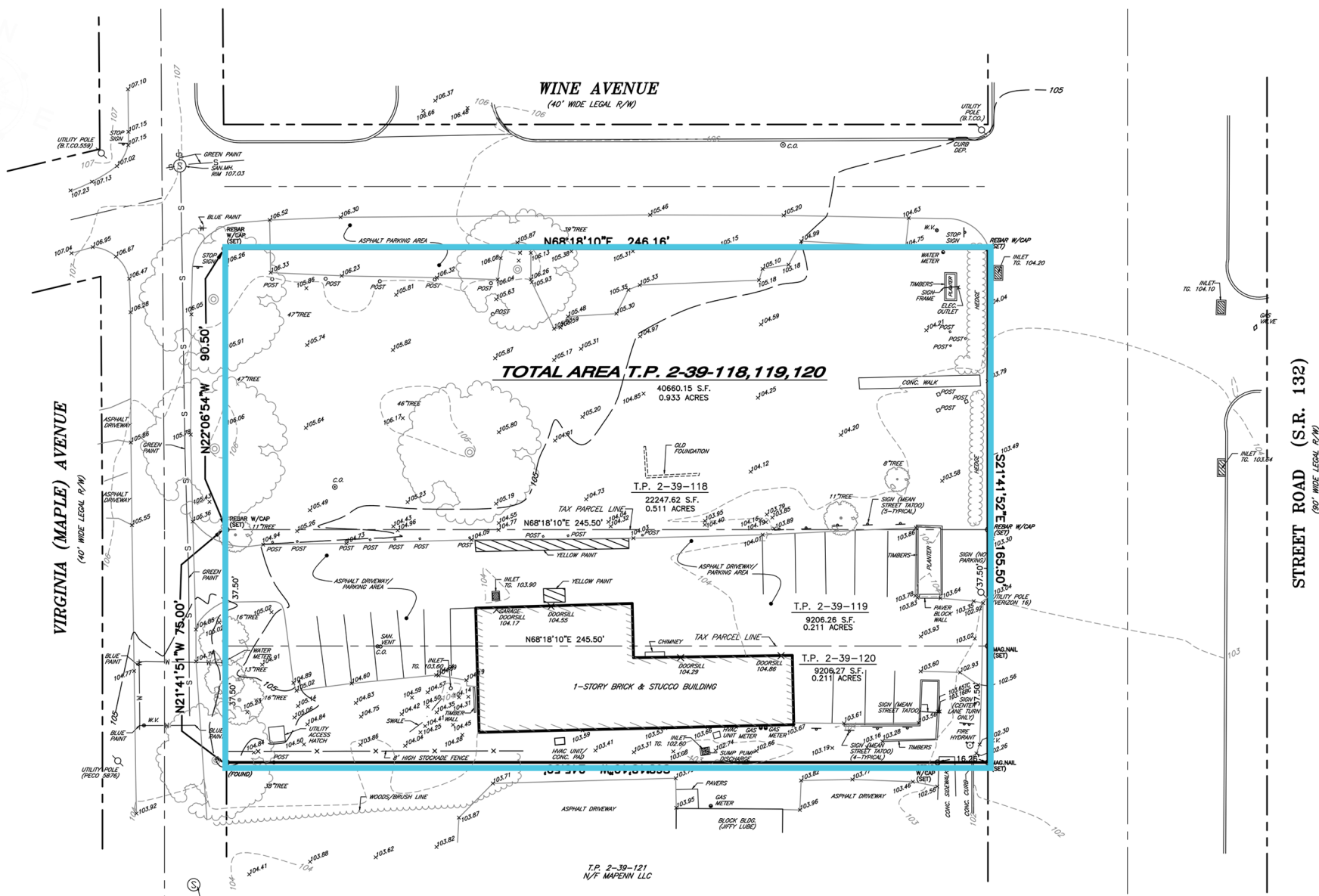
The information and images contained herein are from sources deemed reliable. However, Metro Commercial Real Estate, Inc. makes no representation whatsoever as to their accuracy or authenticity. Images shown may be modified for illustrative purposes. Images may be out-of-date and not current. 2.4.21

2278-2291 STREET ROAD
BENSALEM, PA



www.metrocommercial.com

IDEAL FOR FAST-FOOD, MEDICAL, AND OTHER RETAIL USES



The information and images contained herein are from sources deemed reliable. However, Metro Commercial Real Estate, Inc. makes no representation whatsoever as to their accuracy or authenticity. Images shown may be modified for illustrative purposes. Images may be out-of-date and not current. 03.14.22

2278-2291 STREET ROAD
BENSALEM, PA



www.metrocommercial.com