

# WILLIAMSTOWN, NJ

1325 S BLACK HORSE PIKE

±1.39 ACRES AND ±4.13 ACRES AVAILABLE FOR LEASE OR SALE

AREA RETAILERS



PARCELS LOCATED ALONG A MAIN THROUGHWAY TO ATLANTIC CITY



**METRO**<sup>®</sup>  
COMMERCIAL  
REAL ESTATE, INC.

MetroCommercial.com | PLYMOUTH MEETING, PA | MOUNT LAUREL, NJ | MIAMI, FL

get in touch.

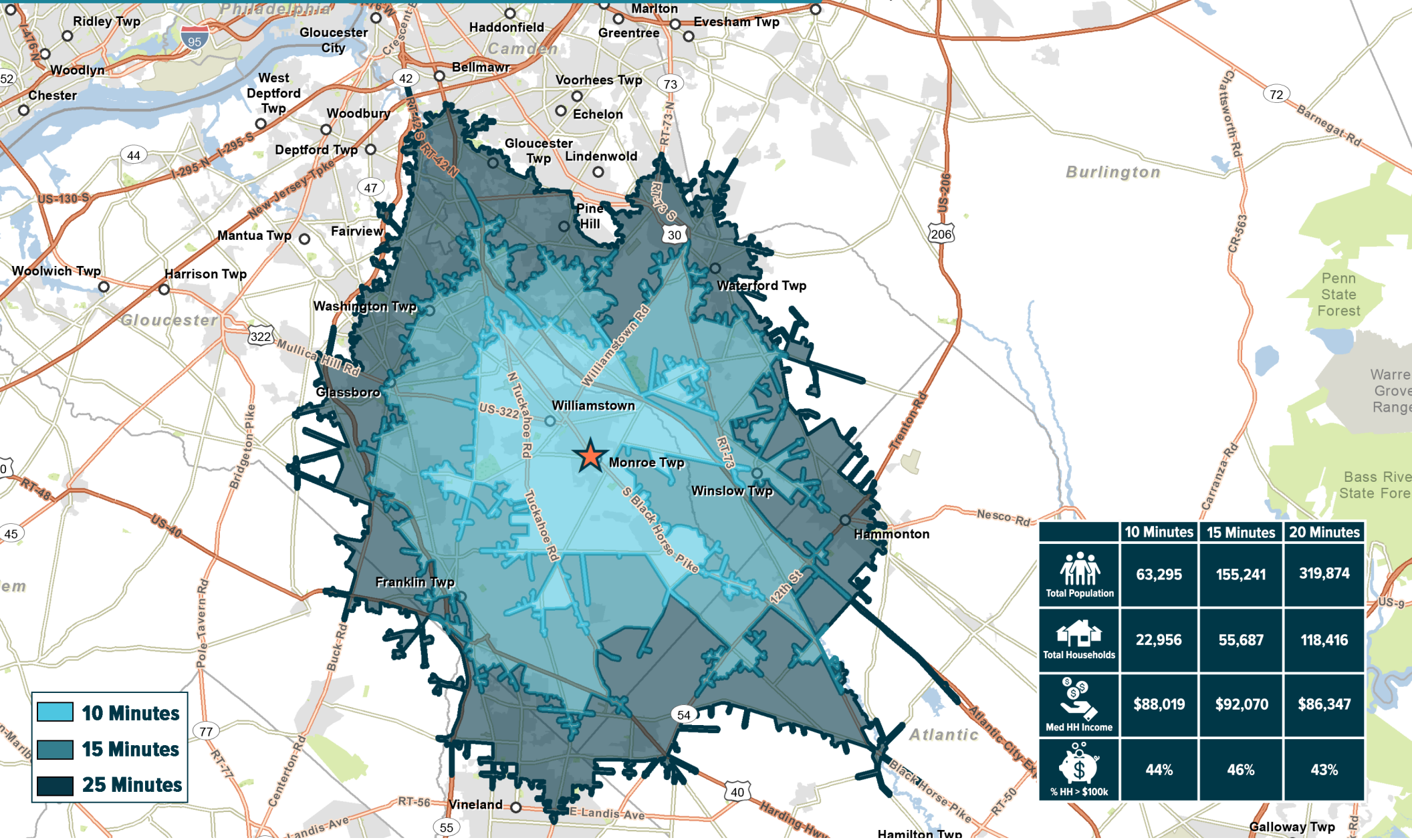
**BRENDAN MULLIGAN**

office 610.825.5222  
direct 610.260.2688  
bmulligan@metrocommercial.com

**JONATHAN SPOERL**

office 215.893.0300  
direct 610.260.2675  
jspoerl@metrocommercial.com

# 55,687 TOTAL HOUSEHOLDS WITHIN A 15 MINUTE DRIVE TIME



■ 10 Minutes  
■ 15 Minutes  
■ 25 Minutes

	10 Minutes	15 Minutes	20 Minutes
Total Population	63,295	155,241	319,874
Total Households	22,956	55,687	118,416
Med HH Income	\$88,019	\$92,070	\$86,347
% HH > \$100k	44%	46%	43%

The information and images contained herein are from sources deemed reliable. However, Metro Commercial Real Estate, Inc. makes no representation whatsoever as to their accuracy or authenticity. Images shown may be modified for illustrative purposes. Images may be out-of-date and not current. 10.20.22

**WILLIAMSTOWN, NJ**  
 1325 S BLACK HORSE PIKE

**IDEALLY PLACED BETWEEN NEWLY RENOVATED WILLIAMSTOWN SHOPPING CENTER TO THE NORTH AND NEWLY DEVELOPED WALMART SUPERCENTER TO THE SOUTH**



The information and images contained herein are from sources deemed reliable. However, Metro Commercial Real Estate, Inc. makes no representation whatsoever as to their accuracy or authenticity. Images shown may be modified for illustrative purposes. Images may be out-of-date and not current. 10.20.22

**WILLIAMSTOWN, NJ**  
1325 S BLACK HORSE PIKE



MetroCommercial.com



## HIGH INCOME GROWTH AREA

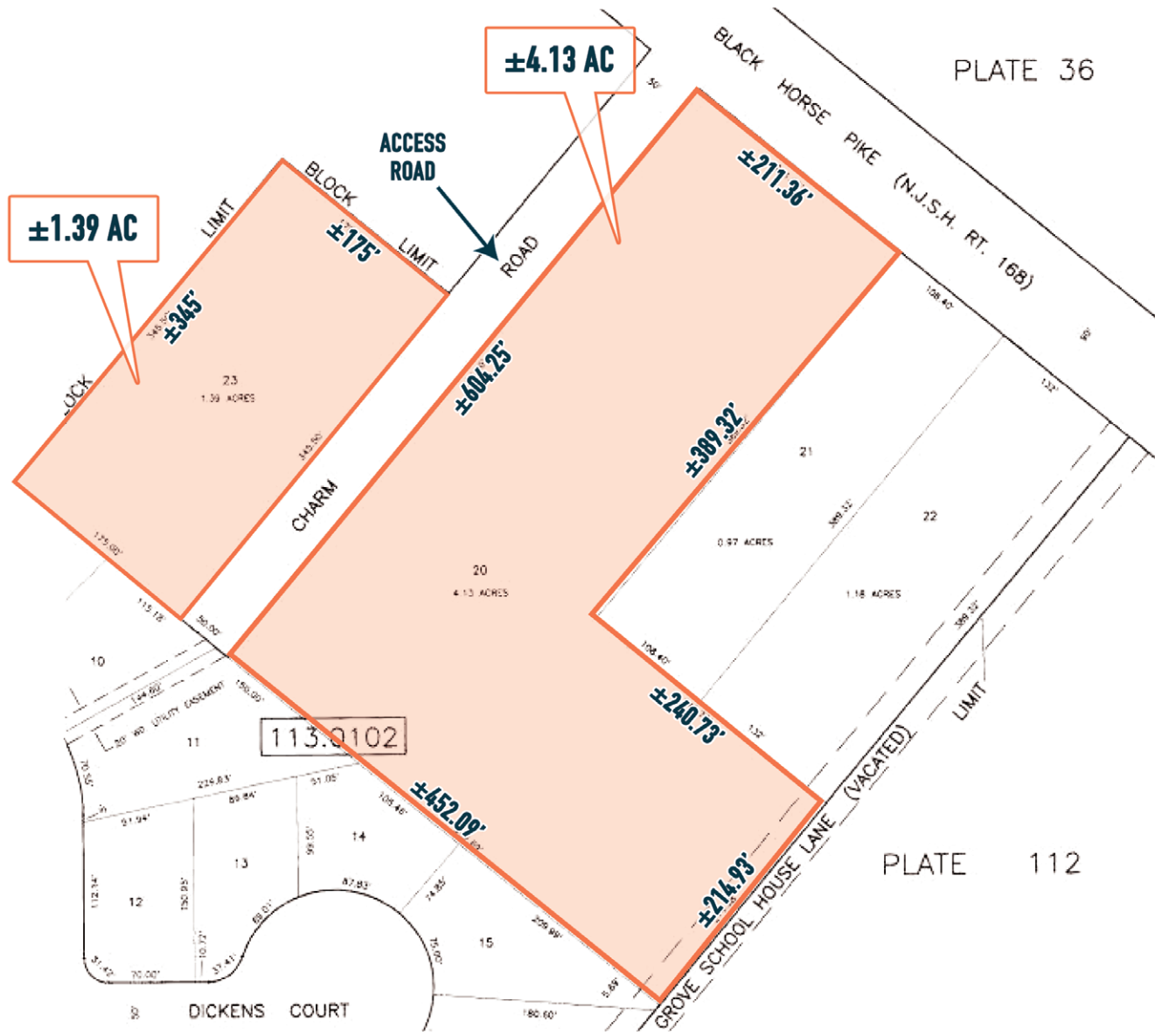
The information and images contained herein are from sources deemed reliable. However, Metro Commercial Real Estate, Inc. makes no representation whatsoever as to their accuracy or authenticity. Images shown may be modified for illustrative purposes. Images may be out-of-date and not current. 10.20.22

**WILLIAMSTOWN, NJ**  
1325 S BLACK HORSE PIKE



MetroCommercial.com

# SITE PLAN



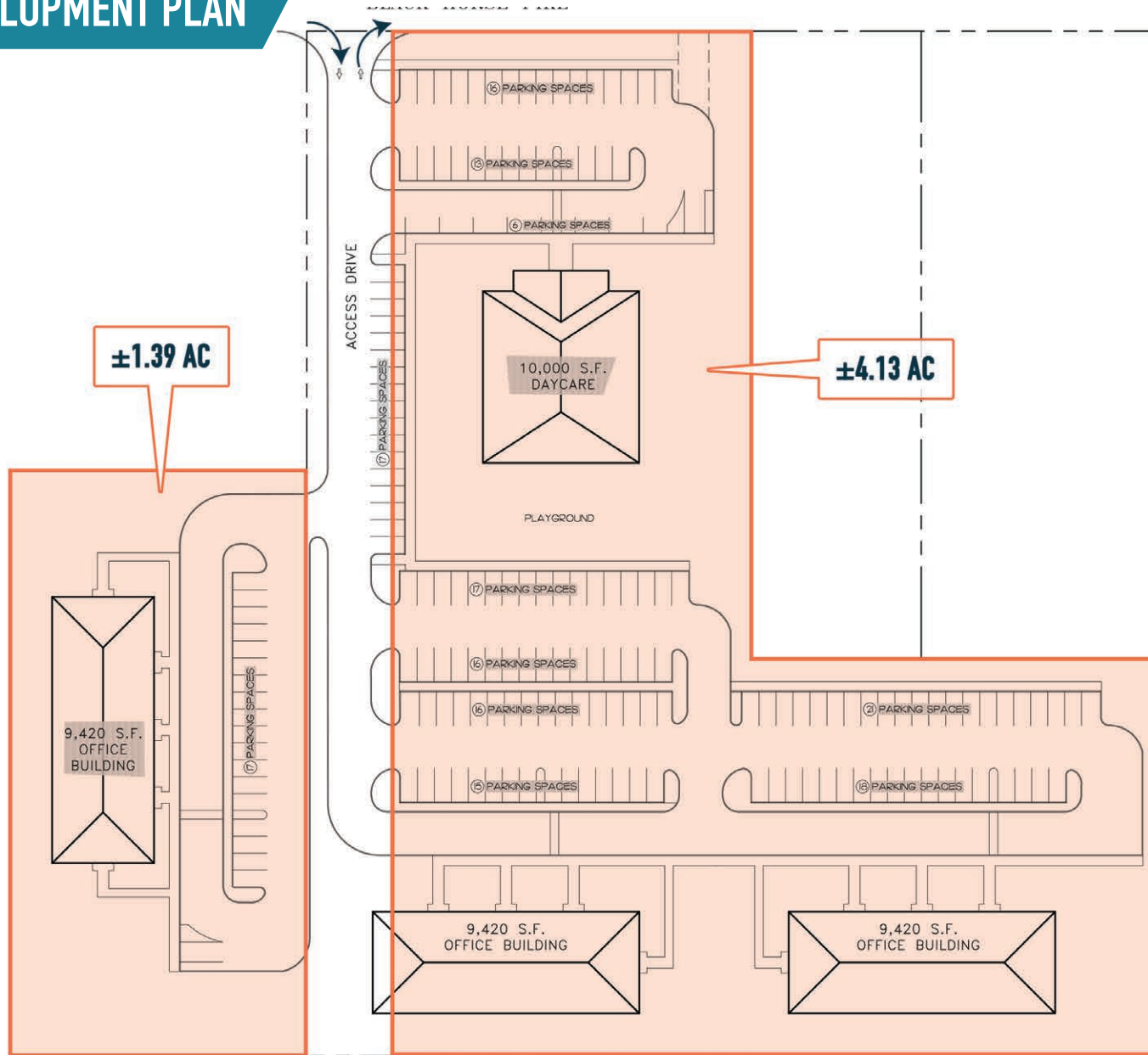
The information and images contained herein are from sources deemed reliable. However, Metro Commercial Real Estate, Inc. makes no representation whatsoever as to their accuracy or authenticity. Images shown may be modified for illustrative purposes. Images may be out-of-date and not current. 10.20.22

**WILLIAMSTOWN, NJ**  
1325 S BLACK HORSE PIKE



MetroCommercial.com

# PROPOSED DEVELOPMENT PLAN



The information and images contained herein are from sources deemed reliable. However, Metro Commercial Real Estate, Inc. makes no representation whatsoever as to their accuracy or authenticity. Images shown may be modified for illustrative purposes. Images may be out-of-date and not current. 10.20.22