

# DAMASCUS, MD

26075 RIDGE ROAD

±1,355 SF - 5,837 SF AVAILABLE FOR LEASE

JOIN  
**weis** CapitalOne

## SMALL SHOP SPACES AVAILABLE AT WEIS GROCERY-ANCHORED SHOPPING CENTER



MetroCommercial.com | PLYMOUTH MEETING, PA | MOUNT LAUREL, NJ | MIAMI, FL

get in touch.

**RAY SCHUPP**

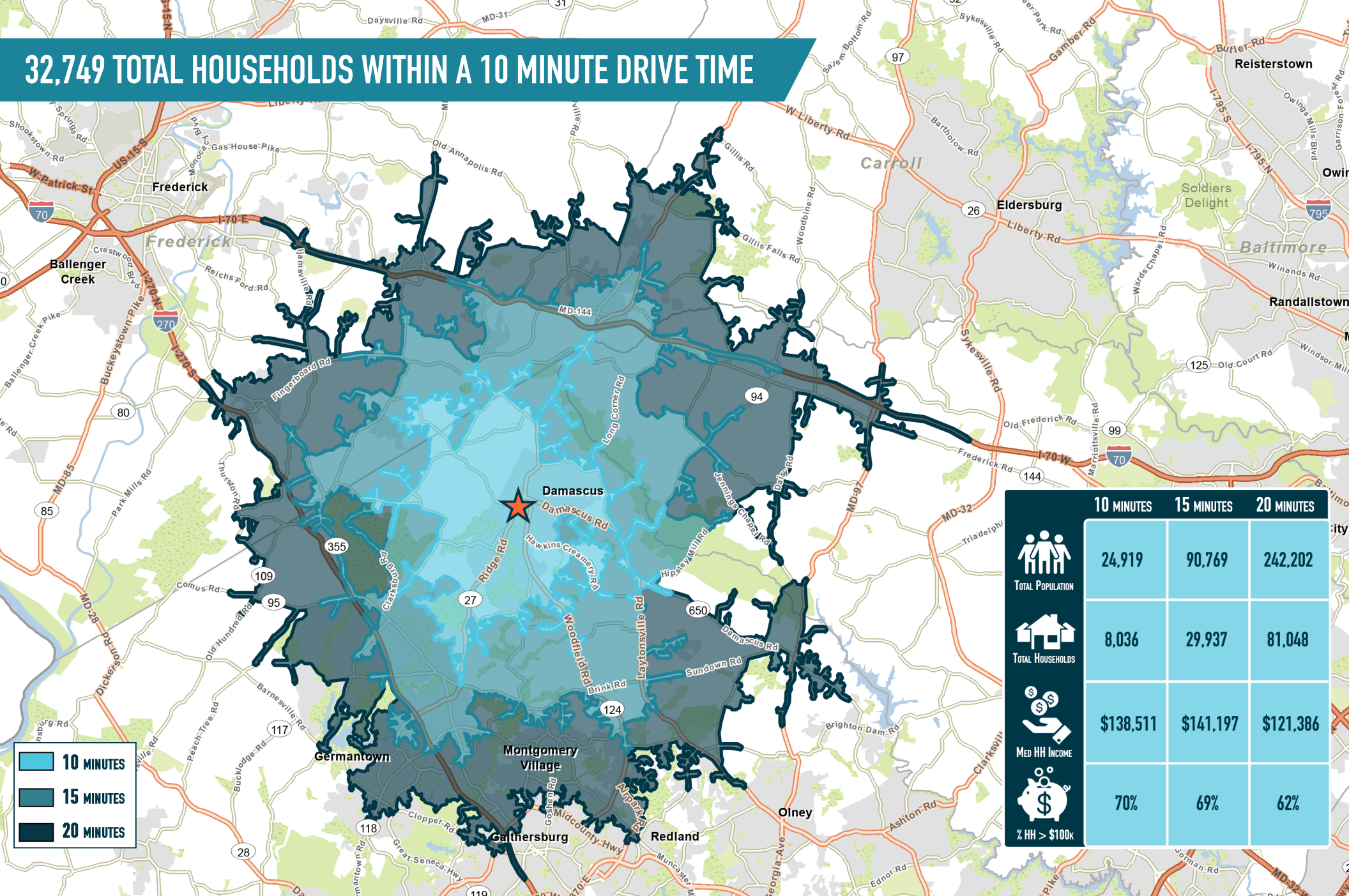
office 301.656.3030  
direct 240.482.3611  
rschupp@hrretail.com

**BRYAN C. DAVIS**

office 301.656.3030  
direct 240.482.3612  
bdavis@hrretail.com



# 32,749 TOTAL HOUSEHOLDS WITHIN A 10 MINUTE DRIVE TIME



	10 MINUTES	15 MINUTES	20 MINUTES
TOTAL POPULATION	24,919	90,769	242,202
TOTAL HOUSEHOLDS	8,036	29,937	81,048
MED HH INCOME	\$138,511	\$141,197	\$121,386
% HH > \$100k	70%	69%	62%

10 MINUTES  
15 MINUTES  
20 MINUTES

The information and images contained herein are from sources deemed reliable. However, Metro Commercial Real Estate, Inc. makes no representation whatsoever as to their accuracy or authenticity. Images shown may be modified for illustrative purposes. Images may be out-of-date and not current. 08.22.23

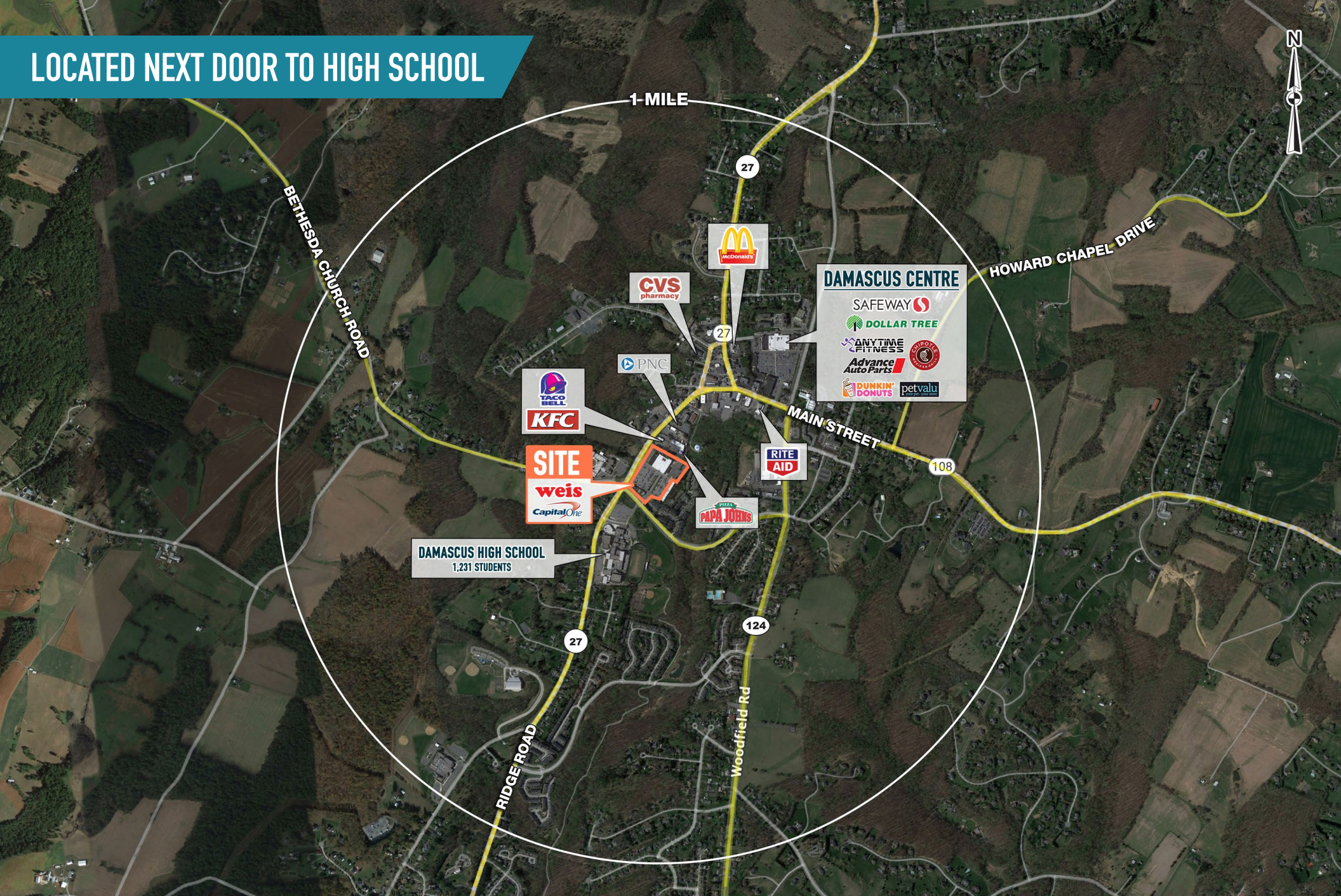
**DAMASCUS, MD**  
26075 RIDGE ROAD



[www.metrocommercial.com](http://www.metrocommercial.com)



# LOCATED NEXT DOOR TO HIGH SCHOOL



The information and images contained herein are from sources deemed reliable. However, Metro Commercial Real Estate, Inc. makes no representation whatsoever as to their accuracy or authenticity. Images shown may be modified for illustrative purposes. Images may be out-of-date and not current. 06.22.23

**DAMASCUS, MD**  
26075 RIDGE ROAD



[www.metrocommercial.com](http://www.metrocommercial.com)



# STRONG VISIBILITY ON RIDGE ROAD (20,542 VPD)



The information and images contained herein are from sources deemed reliable. However, Metro Commercial Real Estate, Inc. makes no representation whatsoever as to their accuracy or authenticity. Images shown may be modified for illustrative purposes. Images may be out-of-date and not current. 08.22.23

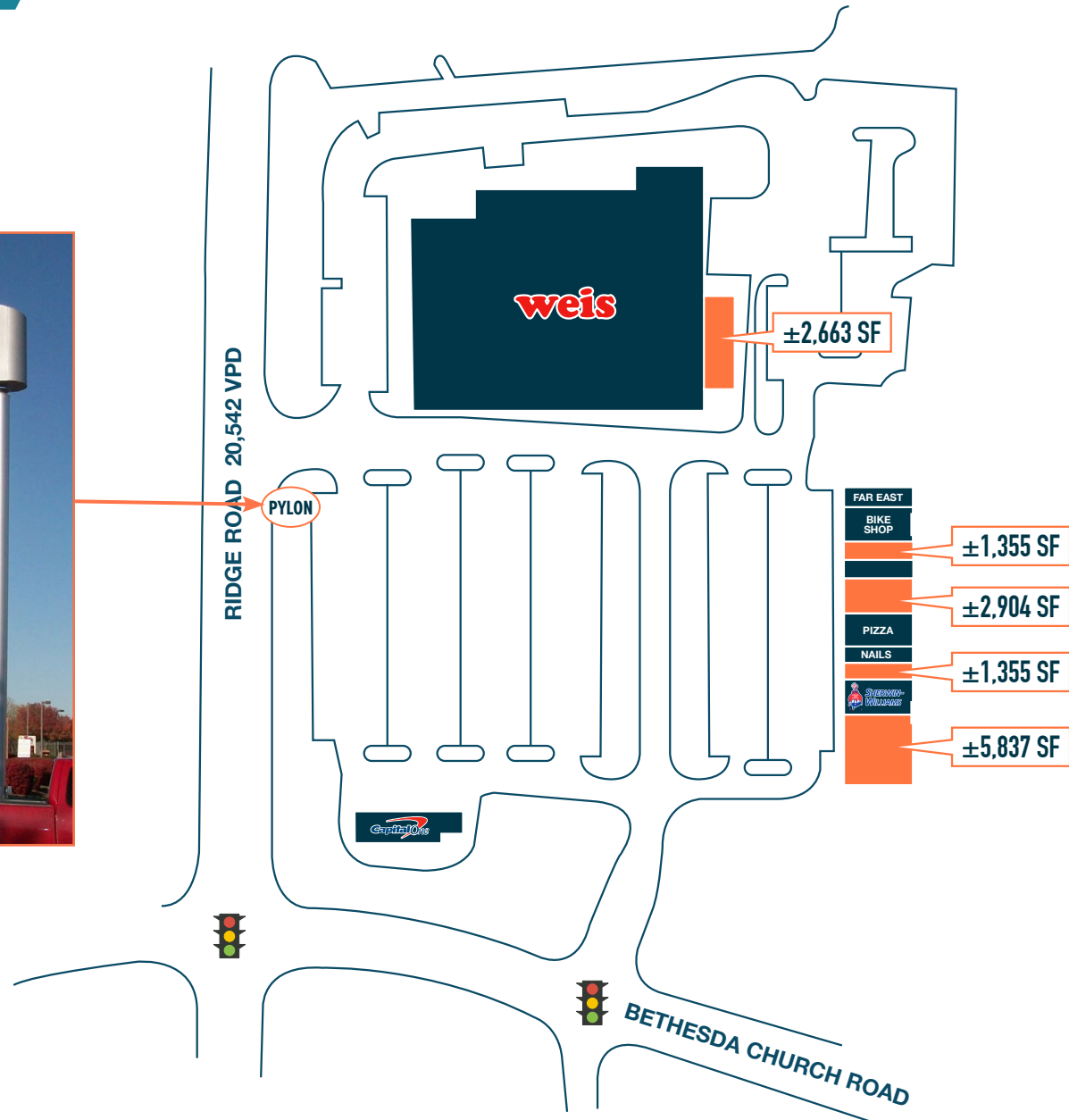
**DAMASCUS, MD**  
26075 RIDGE ROAD



[www.metrocommercial.com](http://www.metrocommercial.com)



# PYLON SIGNAGE AVAILABLE



The information and images contained herein are from sources deemed reliable. However, Metro Commercial Real Estate, Inc. makes no representation whatsoever as to their accuracy or authenticity. Images shown may be modified for illustrative purposes. Images may be out-of-date and not current. 08.22.23

**DAMASCUS, MD**  
26075 RIDGE ROAD



[www.metrocommercial.com](http://www.metrocommercial.com)